

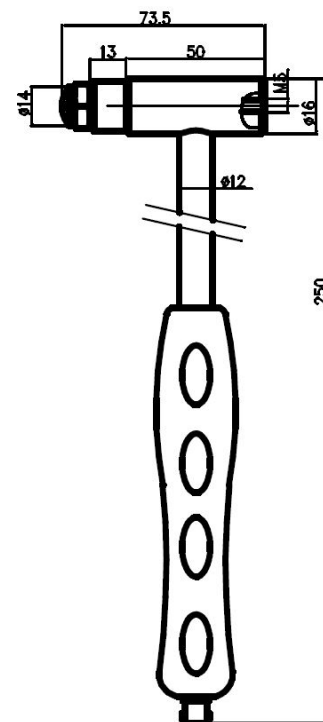
- General purpose IEPE Hammer
- Range 2000N
- Sensitivity 2.5mV/N
- Kit includes impact tips and 2m cable
- BNC connector
- Carry case included



The VTH2KN is a mid range general purpose IEPE Impact Hammer range offered by Kemo Ltd. With a range of 2000N and a sensitivity of 2.5mV/N it is well suited to a wide range of structural testing applications from lightweight to slightly stiffer testing work.

The hammer is supplied in a carry case and also includes a 2m cable with a BNC plug termination. In addition 4 impact tips:

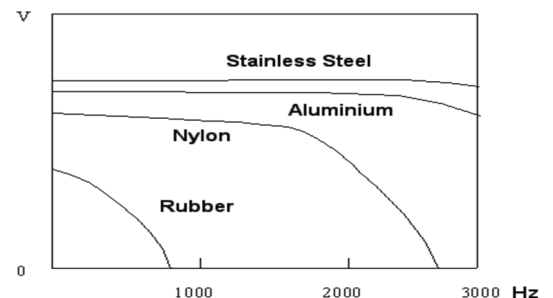
- Stainless Steel
- Aluminium
- Nylon
- Rubber



Typical comparative frequency response

Pulse width and frequency response vary with hammerhead materials.

This drawing is for reference only



VTH2KN	Metric	Imperial
Sensitivity ($\pm 10\%$)	2.5mV/N	11.15mV/lbf
Measuring Range	2000N	449lbf
Non-linearity	$\leq 1\%$	
Resolution	50mN(rms)	
Resonant Frequency	$\geq 55\text{kHz}$	
Hammer head Weight	80gm	2.8oz
Hammer weight (total)	165g	5.8oz
Hammer Head \varnothing	16mm	0.63in
Hammer Length	250mm	9.84in
Output Connector	BNC	
Tips Supplied	Rubber, nylon, aluminium, steel	
Excitation voltage	+18 to +28V	
Constant Current	2-10mA	
Bias Voltage	10-14VDC	
Output Impedance	$\leq 100\Omega$	

Due to continued product development Kemo Limited reserve the right to change specification without notice.