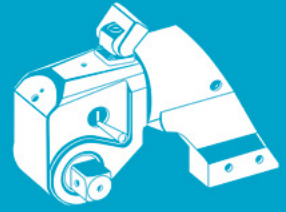


RT SERIES HYDRAULIC TORQUE WRENCH



Used worldwide due to its powerful torque output and long-lasting tool performance.

Atlas Copco

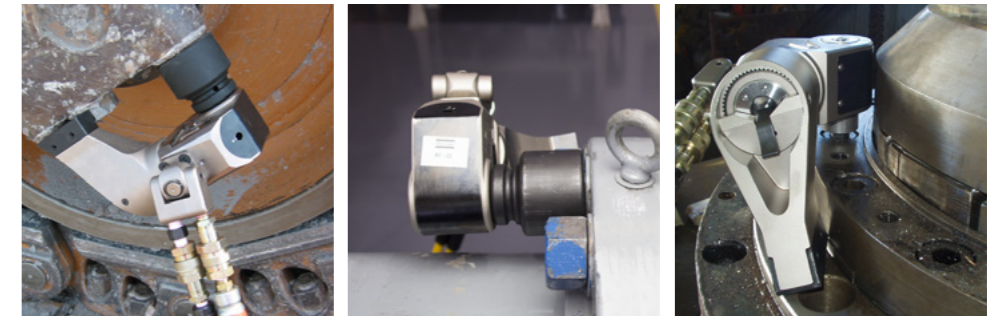


RT SERIES

SQUARE DRIVE HYDRAULIC TORQUE WRENCH

Our vision for the RT Series hydraulic torque wrench is a simple one: create a hydraulic torque wrench with legendary durability for the most demanding applications. The RT series is a hydraulic torque wrench that will deliver superior performance and accuracy over a longer tool life.

From design, to manufacturing and calibration, the RT Series is a purpose-built bolting machine. It stands second to none.



SPRING-LOADED SHROUD
Spring loaded shroud absorbs energy during operation.

EXTERNAL DISENGAGEMENT LEVER
These external disengagement levers make it easy to remove the tool from the application.

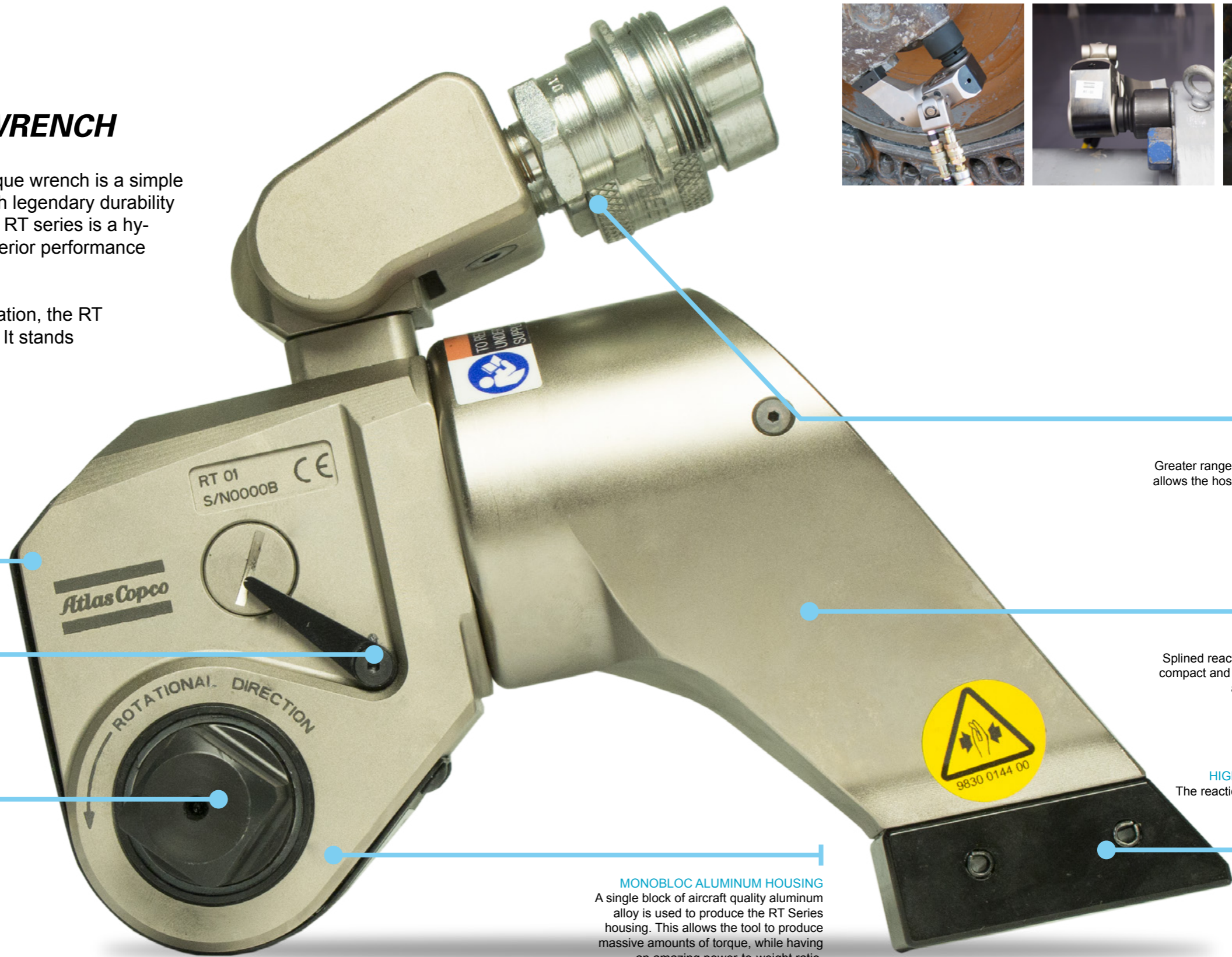
SPLINED SQUARE DRIVE
The RT Series splined square drive distributes load evenly through the drive components, providing full heavy-duty transmission of force. Direct Hex Drives and Hex Adapters are available.

MONOBLOC ALUMINUM HOUSING
A single block of aircraft quality aluminum alloy is used to produce the RT Series housing. This allows the tool to produce massive amounts of torque, while having an amazing power-to-weight ratio.

MULTI-AXIS SWIVEL
Greater range of movement on multiple axis allows the hose to move easier compared to single axis swivels.

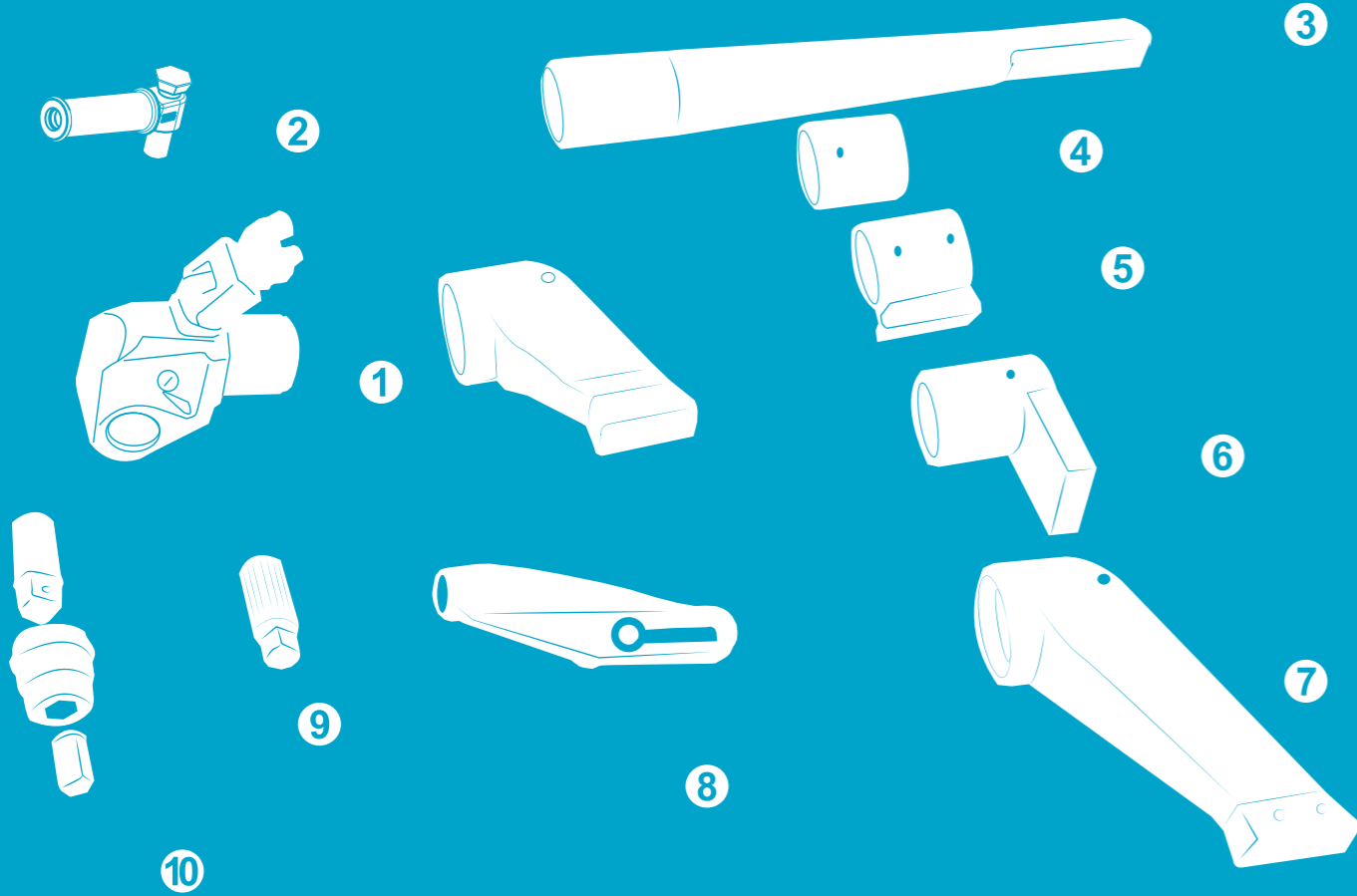
SPLINED REACTION ARM
Splined reaction arm makes the tool more compact and allows the reaction arm to be adjusted for maximum safety.

HIGH STRENGTH STEEL BOOT
The reaction arm boot comes standard. Copper boot also available.



RT SERIES

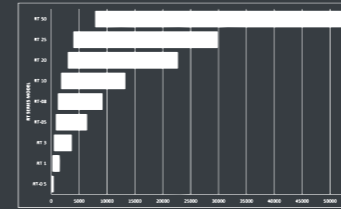
SQUARE DRIVE HYDRAULIC TORQUE WRENCH



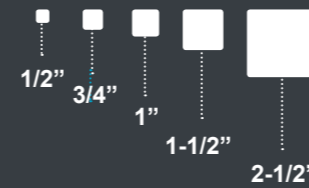
- ① RT with Standard Reaction Arm
- ② RT Safety Handle
- ③ Alco Reaction Arm
- ④ Steel Reaction Sleeve
- ⑤ Steel Reaction Sleeve with foot
- ⑥ CAM-style Reaction Arm
- ⑦ Extended Reaction Arm
- ⑧ Sliding Reaction Arm
- ⑨ Direct Hex Drive
- ⑩ Insert Bit Adapter

KEY FEATURES

9 Models
torque range
55 ft.lb. to 52,500 ft.lb.
(75 Nm to 71,169 Nm)

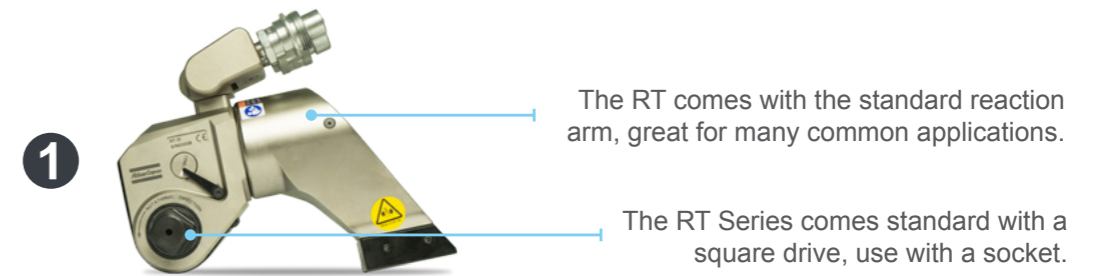


Square Drive Sizes

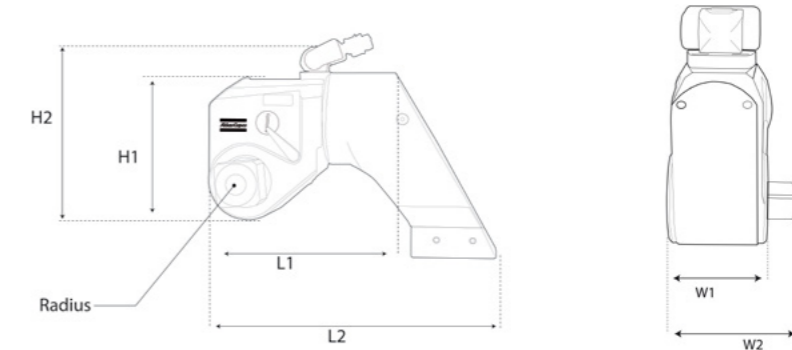


+/- 3 %
Accuracy

STANDARD SETUP



Model	Square Drive in	Torque		Weight		Ordering No.
		ft. lb.	Nm	lb	kg	
RT-0.5	1/2	55	397	0.8	0.4	8434 2010 00
RT-01	3/4	200	1340	3.8	1.9	8434 2010 02
RT-03	1	480	3230	7.8	3.9	8434 2010 05
RT-05	1-1/2	835	5590	15	7.5	8434 2010 09
RT-08	1-1/2	1200	8000	23	11.5	8434 2010 13
RT-10	1-1/2	1755	11520	26.8	13.4	8434 2010 16
RT-20	2-1/2	2960	19760	36	18	8434 2010 20
RT-25	2-1/2	3960	25890	62	31	8434 2010 25
RT-50	2-1/2	7875	52500	96	48	8434 2010 29



Model	Dimensions													
	L1		L2		H1		H2		Radius		W1		W2	
	in	mm	in	mm	in	mm	in	mm	in	mm	in	mm	in	mm
RT-0.5	3.15	81	4.87	125	2.35	60.5	3.62	93	0.52	13.5	1.3	33.5	1.97	50.5
RT-01	4.68	120	7.13	183	3.52	90.5	4.75	122	0.9	23	1.95	50	2.76	71
RT-03	6.04	155	9.24	237	4.68	120	6.08	156	1.28	33	2.59	66.5	3.72	95.5
RT-05	7.21	185	11.23	288	5.63	144.5	7.05	181	1.44	37	3.12	80	4.9	126
RT-08	7.85	202	12.49	321	6.42	164.6	8.4	213.36	1.62	41	3.48	88	4.95	126
RT-10	9	232	13.9	357	7.2	186	9.3	239	1.87	48	3.9	100	5.5	142.5
RT-20	10.2	259	16.55	420	8.5	216	9.9	251	2.17	55.1	4.7	119	6.7	170
RT-25	12	310	18.4	473	9.1	234	11	282	2.37	61	5.2	134	7.4	191
RT-50	15.2	390	23.9	615	11.4	294	13.4	344	30.8	79	6.5	167	8.9	228

Designs and specifications are subject to change without notice or obligation. Read all safety instructions in the manual before usage.

ACCESSORIES

2 SAFETY HANDLE



Description	Ordering No.
HANDLE KIT RT0.5, RT1	8434 2170 34
HANDLE KIT RT3, RT5	8434 2170 33
HANDLE KIT RT8, RT10	8434 2170 32

3 ALCO ARM



Description	Ordering No.
RT0.5-ALC	4222 2126 76
RT01-ALC	4222 2102 64
RT03-ALC	8434 2057 10
RT05-ALC	8434 2139 88
RT08-ALC	8434 2140 36
RT10-ALC	8434 2140 60

4 STEEL SLEEVE



Description	Ordering No.
RT0.5-SSLV	4222 2126 88
RT01-SSLV	8434 2057 08
RT03-SSLV	8434 2057 32
RT05-SSLV	8434 2140 30
RT08-SSLV	8434 2140 51
RT10-SSLV	8434 2140 90

9 DIRECT HEX DRIVE



Description	Ordering No.
RT0.5-HX-10MM	8434 2138 44
RT0.5-HX-12MM	8434 2138 47
RT0.5-HX-14MM	8434 2138 50
RT0.5-HX-16MM	8434 2138 53
RT0.5-HX-17MM	8434 2138 56
RT0.5-HX-19MM	8434 2138 62
RT0.5-HX-22MM	8434 2138 68
RT0.5-HX-24MM	8434 2101 71
RT01-HX-010	8434 2138 71
RT01-HX-012	8434 2138 74
RT01-HX-014	8434 2138 77
RT01-HX-17MM	8434 2056 96

Description	Ordering No.
RT01-HX-19MM	8434 2056 98
RT01-HX-22MM	8434 2057 02
RT01-HX-24MM	8434 2057 04
RT01-HX-27MM	8434 2057 06
RT03-HX-010	8434 2057 14
RT03-HX-012	8434 2057 16
RT03-HX-014	8434 2057 18
RT03-HX-19MM	8434 2057 22
RT03-HX-19MM-EXT	8434 2139 40
RT03-HX-22MM	8434 2057 24
RT03-HX-22MM-EXT	8434 2116 22
RT03-HX-24MM	8434 2057 26
RT03-HX-24MM-EXT	8434 2116 25

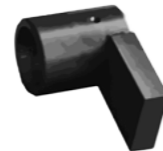
Description	Ordering No.
RT03-HX-27MM	8434 2057 28
RT03-HX-30MM	8434 2139 46
RT03-HX-32MM	8434 2057 30
RT03-HX-36MM	8434 2139 49
RT03-HX-36MM-EXT	8434 2139 52
RT03-HX-38MM	8434 2139 55
RT05-HX-24MM	8434 2140 03
RT05-HX-27MM	8434 2057 36
RT05-HX-27MM-EXT	8434 2140 09
RT05-HX-32MM	8434 2140 12
RT05-HX-32MM-EXT	8434 2140 15

5 STEEL SLEEVE W/FOOT



Description	Ordering No.
RT01-SSLVF	8434 2057 09
RT03-SLVF	4222 2130 21

6 CAM STYLE ARM



Description	Ordering No.
RT03-CAM ARM	4222 2130 12
RT05-3 CAM	4222 2130 57
RT05-03-CAM	4222 2130 48

7 EXT ARM



Description	Ordering No.
RT0.5-EXT	4222 2126 82
RT01-EXT	8434 2056 92
RT03-EXT	8434 2057 12
RT05-EXT	8434 2057 34
RT08-EXT	8434 2140 42
RT10-EXT	8434 2140 66

8 SLIDING REACTION ARM



Description	Ordering No.
RT-01 SLIDING EXT	8434 2057 33
RT-01 SLIDING STD	8434 2150 95
RT-03 SLIDING EXT	8434 2150 37
RT-03 SLIDING STD	8434 2150 30
RT-05 SLIDING EXT	8434 2150 36
RT-05 SLIDING STD	8434 2150 35
RT-08 SLIDING EXT	8434 2150 32
RT-08 SLIDING STD	8434 2150 31

STD= Standard EXT=Extended

Description	Ordering No.
RT-10 SLIDING EXT	8434 2150 34
RT-10 SLIDING STD	8434 2150 33
RT20 SLIDING EXT	8434 2150 90
RT20 SLIDING STD	8434 2150 89
RT25 SLIDING EXT	8434 2150 92
RT25 SLIDING STD	8434 2150 91
RT50 SLIDING EXT	8434 2150 94
RT50 SLIDING STD	8434 2150 93

10 INSERT BIT ADAPTER



Description	Ordering No.
Hex Holder Sq Dr 3/4"-7/8"	8434 2129 59
Hex Holder Sq Dr 1/2"-1/2"	8434 2056 58
Hex Holder Sq Dr 1/2"-7/8"	8434 2056 60
Hex Holder Sq Dr 1 1/2"-1 3/4"	8434 2129 62
Hex Holder Sq Dr 1 1/2"-1 1/4"	8434 2129 65
Hex Holder Sq Dr 1"-1 1/4"	8434 2129 68
Hex Holder Sq Dr 1"-7/8"	8434 2056 62
Hex Size 10MM	8434 2054 24
Hex Size 12MM	8434 2054 26
Hex Size 14MM	8434 2054 30
Hex Size 17MM	8434 2054 32
Hex Size 19MM	8434 2054 34
Hex Size 22MM	8434 2054 36
Hex Size 24MM	8434 2054 38
Hex Size 27MM	8434 2123 32

Description	Ordering No.
Hex Size 24MM	8434 2050 18
Hex Size 27MM	8434 2050 20
Hex Size 28MM	8434 2050 22
Hex Size 29MM	8434 2050 24
Hex Size 30MM	8434 2050 26
Hex Size 32MM	8434 2050 28
Hex Size 33MM	8434 2050 30
Hex Size 36MM	8434 2124 13
Hex Size 36MM	8434 2050 40
Hex Size 40MM	8434 2124 16
Hex Size 41MM	8434 2050 42
Hex Size 46MM	8434 2050 44
Hex Size 50MM	8434 2050 46
Hex Size 1"	8434 2054 20
Hex Size 1"	8434 2050 12

Description	Ordering No.
Hex Size 1 1/16"	8434 2124 10
Hex Size 1 1/4"	8434 2050 14
Hex Size 1 1/8"	8434 2050 16
Hex Size 1 1/2"	8434 2050 32
Hex Size 1 3/4"	8434 2050 34
Hex Size 1 3/8"	8434 2050 36
Hex Size 1 5/8"	8434 2050 38
Hex Size 1"-12pt	8434 2126 86
Hex Size 1/2"	8434 2054 22
Hex Size 13/16"	8434 2054 28
Hex Size 3/4"	8434 2054 40
Hex Size 5/8"	8434 2054 42
Hex Size 7/8"	8434 2054 44
Hex Size 9/16"	8434 2054 46



COMMITTED TO SUSTAINABLE PRODUCTIVITY

We stand by our responsibilities towards our customers, towards the environment and the people around us. We make performance stand the test of time. This is what we call - Sustainable Productivity.

www.atlascopco.com

Atlas Copco