



P-2000 Electropneumatic positioner

Product
Information





P-2000 Electropneumatic positioner

Description

The PMV P-2000 series positioner is one of the sturdiest, reliable two-stage electropneumatic positioners on the market.

Controlling air delivery with the PMV gold plated spool valve assembly and receiving the 4-20 mA control signal through our voice coil magnet unit assembly, this positioner offers a wide range of features and benefits.

P-2000 has an internal gain adjustment, as with other PMV models, the easy to reach span and zero adjustment makes this model very simple to calibrate.

Features and Benefit

- Rugged design for harsh industrial environments.
- Simple, easy to calibrate.
- Low air consumption.
- High air delivery capacity.
- Internal gain adjustment.
- Bright, visible indicator.
- Mounting kits for a variety of actuators-rotary and linear.
- Split range cam standard.
- Can reverse action simply and quickly.
- Positive internal pressure.
- Variety of spindles and characterized cams.
- Easy to add on position feedback, F5.



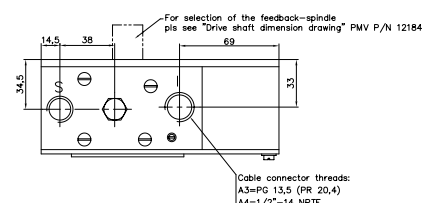
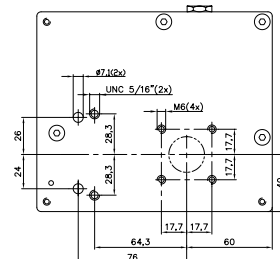
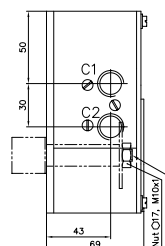
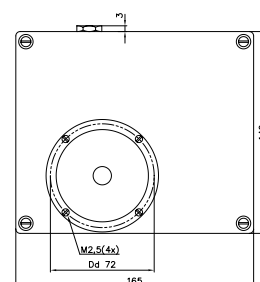
P2000 with F5 feedback unit for limit switches and 4-20 mA feedback.



Technical Data

Input signal	0-20/ 4-20 mA 2wire
Air supply	2-8 bar (30-120 Psi) Oil free, dry air filtered to 25 micron
Air Connections	1/4" G or NPT
Electrical connection	PG 13,5 or 1/2" NPT
Terminals	4 mm ² (AWG 11) screw terminals
Linearity %*	±0,5
Repeatability %*	0,5
Hysteresis + deadband %*	1
Gain factor	Adjustable 3 to 26 %/ % ISA 75.13-1989 Adjustable 50-400 kPa/ kPa at 20% load
Air delivery capacity	340 nl/min (12 SCFM) at 0,6 Mpa/ 87 Psi
Air consumption	10 nl/ min (0,35 SCFM) at 0,6 Mpa/ 87 Psi
Supply pressure effect	0,75%/ 100 kPa (15 Psi)
Position sensitivity	0,25% of span
EMC	89/ 336/ EEC & 92/ 31/EEC
Internal resistance	Max 240 Ω
Temp range	-15°C to 85°C (5°F to 185°F)
Materials, surface treatment	Aluminium anodized, stainless steel
Fasteners	Zincified steel
Ingress protection	IP54/ NEMA 3R
Weight	2,7 kg/ lbs 5,4

* % of full scale



P2000 Series Coding

- 1. Model**
P2000 or P2020 Standard or High air delivery capacity
- 2. Air connections**
N or G NPT 1/4" air 1/2" NPT El. or G 1/4" air PG 13,5 El.
- 3. Surface treatment**
E Anodised, black
- 4. Spindle**
01, 23 etc C1 to C37. See dwg SPNDLS_2000
- 5. Cam**
F01, F20 etc F01 to F51, F01=linear 90 deg, standard
- 6. Front cover**
PV9DA 90 deg, Direct, arrow indicator
- 7. Temperature/gain**
ZN Nitrile seals -15deg °C/Normal gain springs

Example: P2000NE-23F01-PV9DA-ZN

1 23 4 5 6 7