

Pressure Gauge (Analog) - Type SPG



Pressure Gauge (Analog) Type SPG (Stem Mounting)



Pressure Gauge (Analog) Type SPG (Panel Mounting)

Product Description

Area of Application

- Mechanical pressure measurement

Features

- Suitable for hydraulic oil and gaseous media compatible with copper based alloys
- Available in nominal sizes 63 and 100 mm / 2.5 and 4 in
- Thread form: for BSP (G1/4 and G1/2), NPT (1/4 NPT and 1/2 NPT), SAE (7/16–20 UNF)
- Stainless Steel (1.4301) housing
- Acrylic sight glass
- Glycerine filled
- Standard dual scales with pressure indication in bar and PSI
- U-bolt or flange mounting kit on request
- Bezel type: crimped

Note: Please consult STAUFF before you use SPG with other media.

Options

- 316 Stainless Steel connector wetted parts
- Protective rubber cap
- Additional scale readings including private label
- U-bolt and flange mounting kits are available separately as spare parts
- Other diameters upon request (40 mm, 50 mm, 150 mm)

Technical Data

- Pressure gauge according to EN 837-1
- Subject to technical modifications

Accuracies

SPG-063: ± 2/1/2% of span (ASME B40.100 Grade A)
 SPG-100: 1% of span (ASME B40.100 Grade 1A)

Permissible Temperatures

- Ambient: -20 °C ... +60 °C / -4 °F ... +140 °F
- Media: max. +60 °C / max. +140 °F

Protection Ratings

- IP 65: for all manometer SPG 100 and SPG 063 > 16 bar / 232 PSI
 IP 65 protection rating: Dust tight and protected against water jets for all manometer SPG 063 ≤ 16 bar / 232 PSI due to pressure compensation opening
- IP 54: IP 54 protection rating: Dust protected and protected against splashing water

Order Codes

SPG	063	-	00030	-	05	-	P	-	N04	-	U	-	□
①	②		③		④		⑤		⑥		⑦		⑧

① Series and Type

Stainless Steel Pressure Gauge **SPG**

② Size

63 mm, with G1/4, 1/4 NPT **063**
 or 7/16–20 UNF connection
 100 mm, with G1/2 or 1/2 NPT **100**

③ Pressure Ranges

-1,02 ... 0 bar / -30 inHg ... 0 PSI	30HG30
-1,02 ... 2,07 bar / -30 inHg ... 30 PSI	03030
0 ... 2,07 bar / 0 ... 30 PSI	00030
0 ... 4,14 bar / 0 ... 60 PSI	00060
0 ... 6,89 bar / 0 ... 100 PSI	00100
0 ... 11,03 bar / 0 ... 160 PSI	00160
0 ... 13,79 bar / 0 ... 200 PSI	00200
0 ... 20,68 bar / 0 ... 300 PSI	00300
0 ... 34,74 bar / 0 ... 500 PSI	00500
0 ... 41,37 bar / 0 ... 600 PSI	00600
0 ... 68,95 bar / 0 ... 1000 PSI	01000
0 ... 103,42 bar / 0 ... 1500 PSI	01500
0 ... 137,90 bar / 0 ... 2000 PSI	02000
0 ... 206,84 bar / 0 ... 3000 PSI	03000
0 ... 275,79 bar / 0 ... 4000 PSI	04000
0 ... 344,74 bar / 0 ... 5000 PSI	05000
0 ... 413,69 bar / 0 ... 6000 PSI	06000
0 ... 517,11 bar / 0 ... 7500 PSI	07500
0 ... 689,48 bar / 0 ... 10000 PSI	10000

Note: Others on request. Information always refer to the pressure setting of the outside scale.

④ Styles of Scales

bar / PSI (bar outside/PSI inside - standard option)	01
bar	02
PSI	03
PSI / bar (PSI outside/ bar inside)	05
kPa / PSI (kPa outside/ PSI inside)	10

Note: Others on request.

⑤ Adaption

Stem mounting	S
Panel mounting	P

⑥ Process Connection

G1/4 (only SPG 063)	B04
G1/2 (only SPG 100)	B08
1/4 NPT (only SPG 063)	N04
1/2 NPT (only SPG 100)	N08
7/16–20 UNF (only SPG 063)	U04

Note: Others on request.

⑦ Accessories

No accessory	(none)
U-bolt assembly	U
Front flange assembly (for panel mount only)	F
Rear flange assembly	R
U-bolt and front flange assembly (for panel mount only)	UF
Silicone filled	S

⑦ Accessories (for Stem Mount only)

Protective rubber cap	G
-----------------------	----------

⑧ Connection Material & Wetted Parts

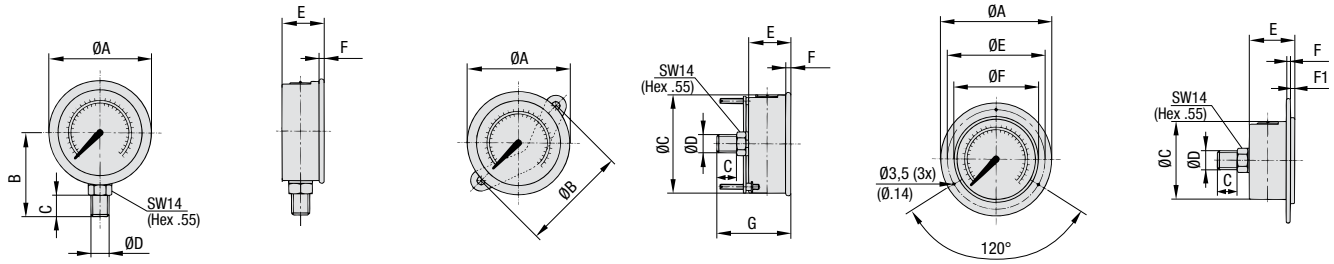
Brass connection and copper alloy wetted parts	(none)
316 Stainless Steel connection and wetted parts	W5

Spare Parts

Rubber boot, black	SPG 063-RBB
U-bolt kit	SPG 063-U
Front flange kit	SPG 063-F
U-bolt kit	SPG 100-U
Front flange kit	SPG 100-F

For further information on this product, please see page B34, STAUFF Test section.

Pressure Gauge (Analog) ▪ Type SPG



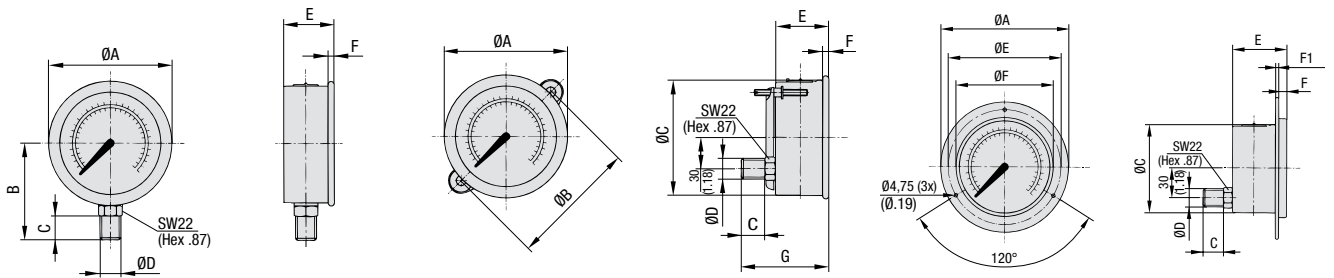
SPG 063 ... S ...

SPG 063 ... P ... U

SPG 063 ... P ... F

Dimensions SPG 063

Version Pressure Gauge	Dimension (mm/in)											
	ØA	ØB	ØC	ØD	ØE	ØF	B	C	E	F	F1	G
SPG-063	69	-	-	G1/4	-	-	54	15	32	6,5	-	-
	2.72	-	-	1/4 NPT	-	-	2.13	.59	1.26	.26	-	-
				7/16-20 UNF								
SPG-063 ... U	69	72	62	G1/4	-	-	-	15	32	6,5	-	56
	2.72	2.83	2.44	1/4 NPT	-	-	-	.59	1.26	.26	-	2.20
				7/16-20 UNF								
SPG-063 ... F	85	-	62	G1/4	75	68	-	15	32	2	2	-
	3.35	-	2.44	1/4 NPT	2.95	2.68	-	.59	1.26	.008	.008	-
				7/16-20 UNF								



SPG 100 ... S ...

SPG 100 ... P ... U

SPG 100 ... P ... F

Dimensions SPG 100

Version Pressure Gauge	Dimension (mm/in)											
	ØA	ØB	ØC	ØD	ØE	ØF	B	C	E	F	F1	G
SPG-100	107	-	-	G1/2	-	-	87	23	48	8	-	-
	4.21	-	-	1/2 NPT	-	-	3.43	.91	1.89	.31	-	-
SPG-100 ... U	107	107	100	G1/2	-	-	-	23	48	8	-	81,5
	4.21	4.21	3.94	1/2 NPT	-	-	-	.91	1.89	.31	-	3.21
SPG-100 ... F	132	-	100	G1/2	116	107	-	23	48	8	1,25	-
	5.20	-	3.94	1/2 NPT	4.57	4.21	-	.91	1.89	.31	.05	-

* FS = Full Scale

Dimensional drawings: All dimensions in mm (in).