

## MODEL SS61010 SINGLE-POINT LOAD CELL

### FEATURES:

- 10 to 100 pounds capacities
- Environmentally protected
- Tension and compression overload stops
- Interchangeable with MK-IV†
- Steel version available with nickel/chrome plating

### DESCRIPTION:

Model SS61010 single-point load cell is designed for any application where the cell may be subject to overload by mishandling or excess weighing. The stainless steel construction makes it an ideal choice for installation in corrosive environments such as those found in the poultry industry. As standard the cell has the gaged area potted to protect it from moisture. The load cell is provided with 10 feet of cable (Please specify other cable lengths).

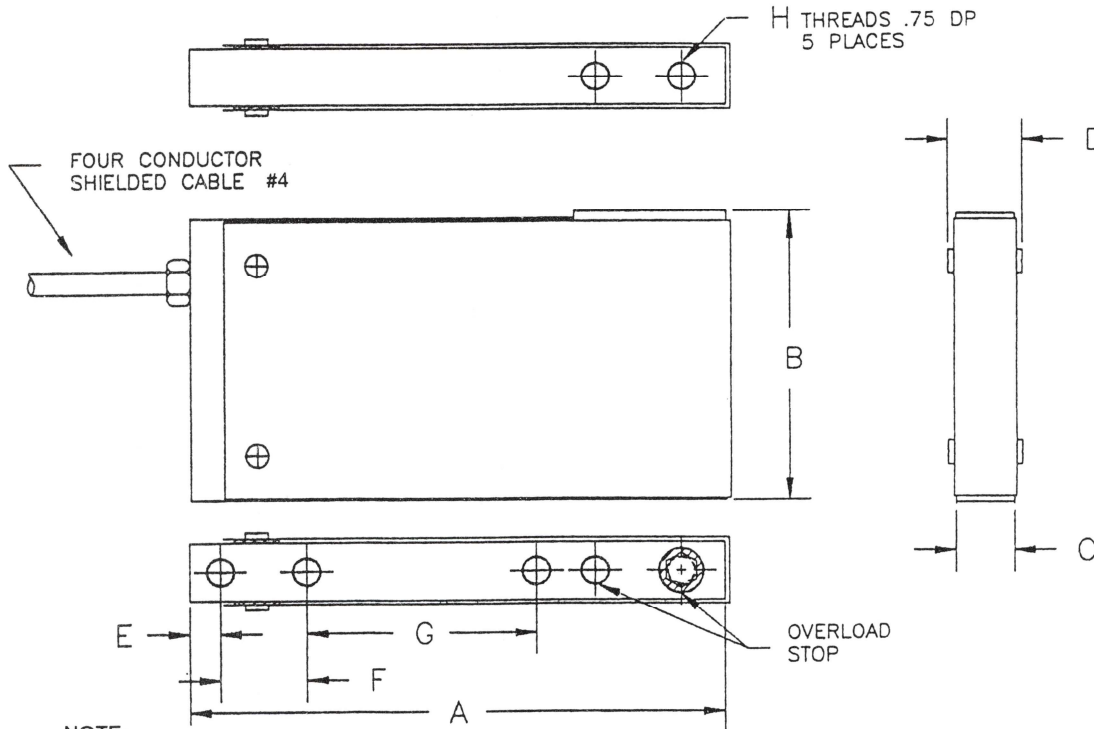
### PERFORMANCE SPECIFICATIONS

<b>Standard Capacities (lbs.):</b>	10, 15, 25, 30, 50, 100
<b>Excitation Voltage:</b>	10VDC - Maximum 15VDC
<b>Rated Output:</b>	2.0 mv/v Nominal
<b>Non-Linearity:</b>	< 0.03% FSO
<b>Hysteresis:</b>	< 0.02% FSO
<b>Non-Repeatability:</b>	± 0.01% FSO
<b>Zero Balance:</b>	± 2.0%
<b>Bridge Resistance:</b>	350 ohms nominal
<b>Safe Overload:</b>	150% of Rated Capacity
<b>Temperature:</b>	
<b>Compensated Range:</b>	0-150 Deg. F
<b>Effect on Output:</b>	< 0.0008% FSO/deg. F
<b>Effect on Zero:</b>	< 0.0011% FSO/deg. F

† Can be used to replace MKIII

CAPACITY LBS.	A	B	C	D MAX	E	F	G	H THREADS
10 - 100	4.63	2.45	.70	.90	.25	.75	2.00	1/4-28 UNF-2B

ELECTRICAL TERMINATION  
 INPUT          OUTPUT          SHIELD  
 RED          (+)          GREEN          (+)  
 BLACK          (-)          WHITE          (-)  
 COMPRESSION POSITIVE



- NOTE:  
 #1. STD WIRING  
 #2. DIMENSIONS SHOWN ARE IN INCHES  
 #3. MATERIAL: STAINLESS STEEL OR TOOL STEEL  
 #4. 10 FEET CABLE LENGTH, PVC JACKET, OTHER LENGTHS AVAILABLE PER SPECIAL ORDER

**ORDER INFORMATION:**

ARTECH is dedicated to maintaining adequate inventories of its Load Cells to provide the best service in the industry.

Order by the model number and indicate the capacity required.

Custom services such as matched load cell outputs, special threading and custom calibrations are available on an optional basis at an extra cost. LET US KNOW WHAT YOU NEED...WE LISTEN!

Represented by:



1966 Keats Drive, Riverside, CA 92501  
 (951) 276-3331  
 (800) 654-8181  
 Fax: (951) 276-4556  
 Email: info@artechindustriesinc.com  
 www.artechindustriesinc.com

**QUALITY • PERFORMANCE • SERVICE**  
**"A PREFERRED NAME IN LOAD CELL TECHNOLOGY"**