

MODEL 40310 BENDING BEAM LOAD CELL

FEATURES:

- 50 to 7.5K pounds capacities
- Environmentally protected with neoprene sleeve
- High alloy tool steel
- Low profile
- Low cost
- Factory Mutual (F.M.) Approved †

DESCRIPTION:

Model 40310, a bending beam load cell, is designed to provide precision performance under adverse conditions. The cell is environmentally protected with waterproof seal and neoprene sleeve. Its high alloy tool steel construction and low cost makes it an excellent choice for heavy wash down areas. The cell is supplied with an integral 20 foot cable.

PERFORMANCE SPECIFICATIONS

| | |
|---------------------------------------|--|
| Standard Capacities (lbs.): | 50, 100, 200, 250, 500, 1K, 1KLE, 2.5K, 5K, 7.5K |
| Excitation Voltage: | 10VDC - Maximum 15VDC |
| Rated Output 50 - 1K: | 2.0 + .3/ - 0 mv/v |
| Rated Output 1KLE - 7.5K: | 2.05 ± .03 mv/v |
| Non-Linearity: | < 0.03% FSO (Full Scale Output) |
| Hysteresis: | < 0.02% FSO |
| Non-Repeatability: | < 0.01% FSO |
| Zero Balance: | ±1.0% FSO |
| Bridge Resistance 50 - 1K: | 750 ohms nominal |
| Bridge Resistance 1KLE - 7.5K: | 350 ohms nominal |
| Safe Overload: | 150% of Rated Capacity |
| Temperature: | |
| Compensated Range: | 0 - 150 deg. F |
| Effect on Output: | < 0.0008% FSO/deg. F |
| Effect on Zero: | < 0.0011% FSO/deg. F |
| Finish: | Electroless Nickel/Chrome Plated |



| CAPACITY LBS. | A | B | C | D | E | F | G | H | I | J |
|---------------|-------|------|------|-----|-----|------|------|-----|------|-----|
| 50 - 100 | 6.00 | 1.38 | 1.06 | .31 | .38 | .88 | 4.25 | .31 | - | - |
| 200 - 1K | 6.63 | 1.38 | 1.06 | .53 | .50 | 1.12 | 4.25 | .53 | - | - |
| 1KLE - 2.5K | 11.38 | 3.00 | 1.25 | .53 | .50 | 1.75 | 8.25 | .62 | 1.18 | .12 |
| 5K - 7.5K | 12.81 | 4.50 | 2.75 | .78 | .75 | 2.00 | 8.50 | .75 | 1.38 | .18 |

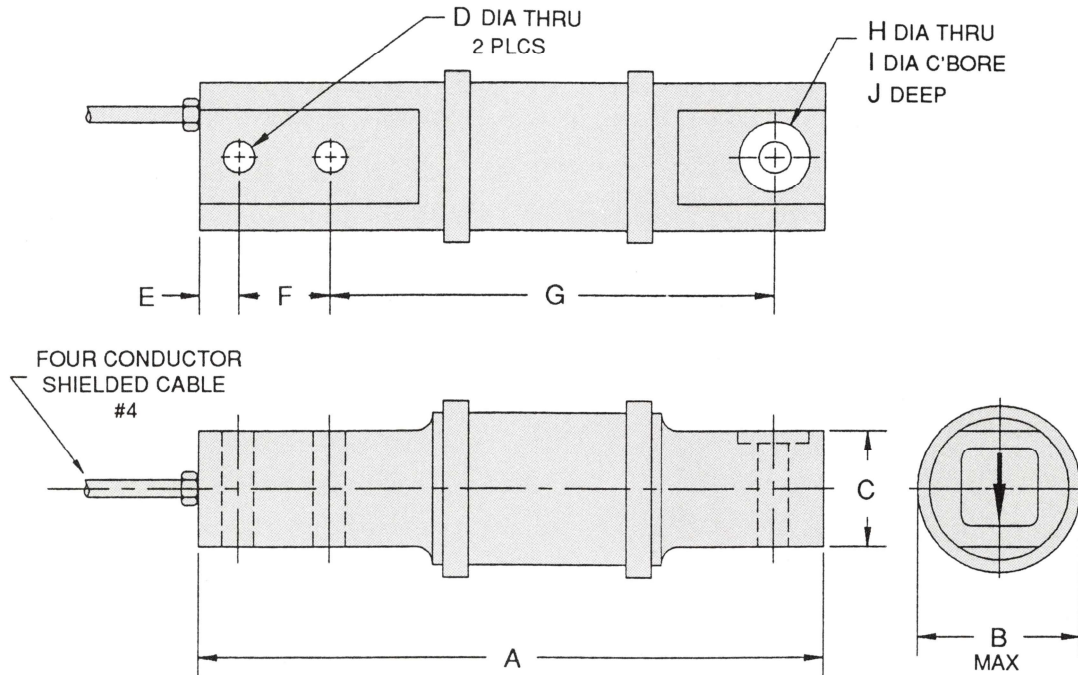
ELECTRICAL TERMINATION

Input Output Shield

Green (+) White (+)

Black (-) Red (-)

COMPRESSION POSITIVE



NOTE;

- #1. STD WIRING
- #2. DIMENSIONS SHOWN ARE IN INCHES
- #3. MATERIAL : TOOL STEEL - NICKEL/CHROME PLATE
- #4. 20 FEET CABLE LENGTH, PVC JACKET
OTHER LENGTHS AVAILABLE PER SPECIAL ORDER

† Factory Mutual Systems approved as intrinsically safe when installed per F.M. approved installation drawing. Contact ARTECH sales department for details.

ORDER INFORMATION:

ARTECH is dedicated to maintaining adequate inventories of its Load Cells to provide the best service in the industry.

Order by the model number and indicate the capacity required.

Custom services such as matched load cell outputs, special threading and custom calibrations are available on an optional basis at an extra cost. **LET US KNOW WHAT YOU NEED...WE LISTEN!**

Represented by:



1966 Keats Drive, Riverside, CA 92501
 (951) 276-3331
 (800) 654-8181
 Fax: (951) 276-4556
 Email: info@artechindustriesinc.com
 www.artechindustriesinc.com

QUALITY • PERFORMANCE • SERVICE
"A PREFERRED NAME IN LOAD CELL TECHNOLOGY"