

Datasheet

GS 05 – GS 30



GS with active front panel



Rear view GS 05 / GS 10 / GS 12 with Harting plug



GS with passive front panel



Rear view GS 15/20/30 with coax plug

These compact power supplies were developed for small magnetrons in production plants and laboratories. Easy and safe operation make these power supplies very flexible for many processes. The arc handling adjusts automatically to different process parameters, so that programming is unnecessary. The air cooled units are designed for manual and remote-controlled operation, for installation in 19"-racks.

★ Highlights

- ★ Output power 0.5 – 3.0 kW
- ★ Air cooling
- ★ 1/2 19"-case, 3 HU
- ★ Interchangeable interfaces
- ★ Display for current, voltage and power
- ★ Manual operation via front panel
- ★ Automatic arc handling

We are happy to help!

ADL Analoge & Digitale Leistungselektronik GmbH
Bunsenstr. 30 · D-64293 Darmstadt
www.adl-gmbh.com

Customer Support

Tel. +49 (0) 6151 86072-41 or -42
Fax +49 (0) 6151 86072-75
E-Mail: sales@adl-gmbh.com

Datasheet

Variants

Type	DC-Output			Order-No.
GS 05/800	0.5 kW	800 V	0.9 A	03Z040
GS 10/800	1.0 kW	800 V	1.7 A	03Z090
GS 15/800	1.5 kW	800 V	3.0 A	03Z140
GS 20/800	2.0 kW	800 V	3.5 A	03Z190
GS 30/800	3.0 kW	800 V	5.3 A	03Z240
GS 05/1000	0.5 kW	1000 V	0.7 A	03Z050
GS 10/1000	1.0 kW	1000 V	1.4 A	03Z092
GS 15/1000	1.5 kW	1000 V	2.4 A	03Z150
GS 20/1000	2.0 kW	1000 V	2.8 A	03Z200
GS 30/1000	3.0 kW	1000 V	4.2 A	03Z250
GS 12/2000	1.2 kW	2000 V	1.0 A	03Z110

Datasheet

Options and Accessories - detailed Information see Datasheet "Accessories"

Type	Order-No.
Control Interfaces	
AS4 – analogue for U-, I- or P-Regulation	01Y001
AS4F – analogue for U-, I- or P-Regulation, fast Data Transfer	01Y021
AS6 – analogue for U-, I-, P-Limit Specification	01Y061
Profibus DP	01Y160
EtherCAT®	01Y170
RS232/485	01Y181
Indications	
Front panel active with 3 ½ digit Display	02Y020
Front panel passive with 3 ½ digit Display	02Y021
Connectors	
Device HV-Connector Harting (default)	02Y028
Device HV-Connector Coax	02Y026
Device HV-Connector Terminal Box	02Y027
Cable Connector Coax	03Y030
Cable Connector Harting straight	03Y222
Cable Connector Harting angled	03Y242
Miscellaneous	
Mains Voltage 3 x 208 V *	10Y015
Output Voltage floating **	10Y020
19" Mounting Frame for 2 Units	02Y030

* (only GS 15 and GS 20)

** (only GS 15, GS 20 and GS 30)

We are happy to help!

ADL Analoge & Digitale Leistungselektronik GmbH
Bunsenstr. 30 · D-64293 Darmstadt
www.adl-gmbh.com

Customer Support

Tel. +49 (0) 6151 86072-41 or -42
Fax +49 (0) 6151 86072-75
E-Mail: sales@adl-gmbh.com

Datasheet

Technical Data

	GS 05/800	GS 10/800	GS 15/800	GS 20/800	GS 30/800
Operational Data					
Output Power	0.5 kW	1 kW	1.5 kW	2 kW	3 kW
Output Voltage	800 V Plus pole grounded				
	Option: Minus pole grounded		Option: Floating		
Output Current	0.9 A	1.7 A	3 A	3.5 A	5.3 A
Indication	3 ½ digit display for current, voltage and power				
Control	Current, voltage or power controlled				
Operation Mode	Manually via front panel or external via control interface				
Set Point	0 ... 100 % of nominal value for current, voltage or power				
Output Accuracy	+ / - 1 % of nominal value for current, voltage and power				
Arc Suppression	Quenching time: 6 µs up to 3 ms, automatically Delay time: 6 µs up to 10 ms, automatically				
Mains Input Connection					
Line Voltage	230 V, + / - 10 %, 50/60 Hz (optional: 208 V, L1, L2, PE)		3 x 400 V, + / - 10 %, 50/60 Hz (optional: 3 x 208 V, GS 15, GS 20), PE		
Fusing	6 A	6 A	6 A (10 A)	6 A (10 A)	10 A
Power Consumption	0.6 kVA	1.2 kVA	1.8 kVA	2.4 kVA	3.6 kVA
DC-Output Connection					
DC-Cable JZ-600-Y-CY or RG 213	2 x 1.5 mm ²				
DC-Connection (X1)	Harting Han-Modular Compact or Coax				
Cooling System					
Air Cooling	Built-in fan, maximum ambient temperature 40° C				
Noise Emission	L _{pA} < 70 dB (A)				
Mechanical Data					
Size (without Plug)	Width: 210 mm (½ 19"), Height: 112 mm (3 HU), Length: 512 mm				
Weight (without Packaging)	11 kg	11 kg	12 kg	12 kg	12 kg

We are happy to help!

ADL Analoge & Digitale Leistungselektronik GmbH
Bunsenstr. 30 · D-64293 Darmstadt
www.adl-gmbh.com

Customer Support

Tel. +49 (0) 6151 86072-41 or -42
Fax +49 (0) 6151 86072-75
E-Mail: sales@adl-gmbh.com

Datasheet

Technical Data

	GS 05/1000	GS 10/1000	GS 15/1000	GS 20/1000	GS 30/1000
Operational Data					
Output Power	0.5 kW	1 kW	1.5 kW	2 kW	3 kW
Output Voltage	1000 V Plus pole grounded				
	Option: Minus pole grounded		Option: floating		
Output Current	0.7 A	1.4 A	2.4 A	2.8 A	4.2 A
Indication	3 ½ digit display for current, voltage and power				
Control	Current, voltage or power controlled				
Operation Mode	Manually via front panel or external via control interface				
Set Point	0 ... 100 % of nominal value for current, voltage or power				
Output Accuracy	+ / - 1 % of nominal value for current, voltage and power				
Arc Suppression	Quenching time: 6 µs up to 3 ms, automatically Delay time: 6 µs up to 10 ms, automatically				
Mains Input Connection					
Line Voltage	230 V, + / - 10 %, 50/60 Hz (optional: 208 V, L1, L2, PE)		3 x 400 V, + / - 10 %, 50/60 Hz (optional: 3 x 208 V, GS 15, GS 20), PE		
Fusing	6 A	6 A	6 A (10 A)	6 A (10 A)	10 A
Power Consumption	0.6 kVA	1.2 kVA	1.8 kVA	2.4 kVA	3.6 kVA
DC-Output Connection					
DC-Cable JZ-600-Y-CY or RG 213	2 x 1.5 mm ²				
DC-Connection (X1)	Harting Han-Modular Compact or Coax				
Cooling System					
Air Cooling	Built-in fan, maximum ambient temperature 40° C				
Noise Emission	L _{pA} < 70 dB (A)				
Mechanical Data					
Size (without Plug)	Width: 210 mm (½ 19"), Height: 112 mm (3 HU), Length: 512 mm				
Weight (without Packaging)	11 kg	11 kg	12 kg	12 kg	12 kg

We are happy to help!

ADL Analoge & Digitale Leistungselektronik GmbH
Bunsenstr. 30 · D-64293 Darmstadt
www.adl-gmbh.com

Customer Support

Tel. +49 (0) 6151 86072-41 or -42
Fax +49 (0) 6151 86072-75
E-Mail: sales@adl-gmbh.com

Datasheet

Technical Data

GS 12/2000	
Operational Data	
Output Power	1.2 kW
Output Voltage	2000 V Plus pole grounded
	Option: Minus pole grounded
Output Current	1 A
Indication	3 ½ digit display for current, voltage and power
Control	Current, voltage or power controlled
Operation Mode	Manually via front panel or external via control interface
Set Point	0 ... 100 % of nominal value for current, voltage or power
Output Accuracy	+ / - 1 % of nominal value for current, voltage and power
Arc Suppression	Quenching time: 6 µs up to 3 ms, automatically Delay time: 6 µs up to 10 ms, automatically
Mains Input Connection	
Line Voltage	230 V, + / - 10 %, 50/60 Hz (optional: 208 V, L1, L2, PE)
Fusing	10 A
Power Consumption	1.4 kVA
DC-Output Connection	
DC-Cable JZ-600-Y-CY or RG 213	2 x 1.5 mm ²
DC-Connection (X1)	Harting Han-Modular Compact or Coax
Cooling System	
Air Cooling	Built-in fan, maximum ambient temperature 40° C
Noise Emission	$L_{pA} < 70$ dB (A)
Mechanical Data	
Size (without Plug)	Width: 210 mm (½ 19"), Height: 112 mm (3 HU), Length: 512 mm
Weight (without Packaging)	11 kg

We are happy to help!

ADL Analoge & Digitale Leistungselektronik GmbH
Bunsenstr. 30 · D-64293 Darmstadt
www.adl-gmbh.com

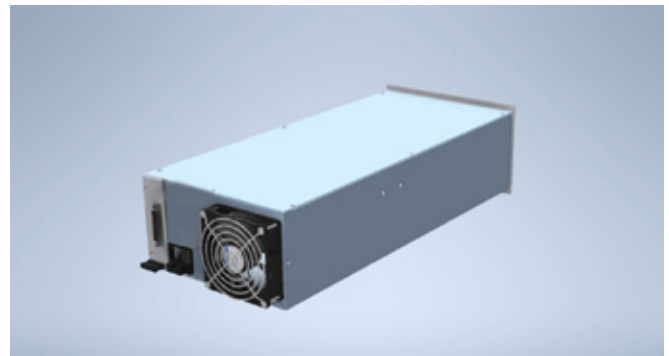
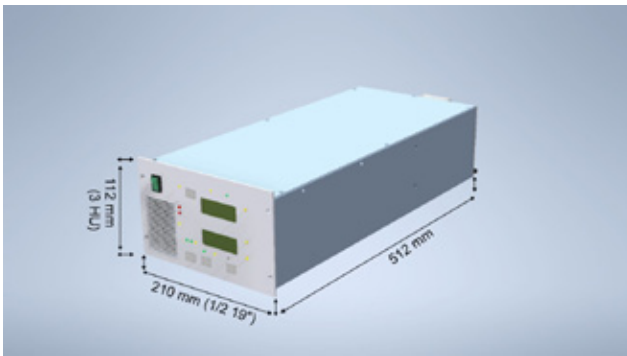
Customer Support

Tel. +49 (0) 6151 86072-41 or -42
Fax +49 (0) 6151 86072-75
E-Mail: sales@adl-gmbh.com



Datasheet

Dimensions



Exemplary illustration, front panel and rear view can differ, depending on device type, nevertheless, dimensions are the same.

© 2022 ADL Analoge & Digitale Leistungselektronik GmbH. All rights reserved.

ADL products are constantly improved. ADL therefore reserves the right to make technical changes without prior notice or obligation. To the best of our knowledge, the information contained in this product presentation (short version) is the most accurate available as the date of the current edition. The information is not binding.

We are happy to help!

ADL Analoge & Digitale Leistungselektronik GmbH
Bunsenstr  e 30 · D-64293 Darmstadt
www.adl-gmbh.com

Customer Support

Tel. +49 (0) 6151 86072-41 or -42
Fax +49 (0) 6151 86072-75
E-Mail: sales@adl-gmbh.com