

Input / Output Channels

- 12 independent CAN-FD busses
- 8 Counter / Binary Inputs 3.5 V ... 30 VDC
- 1 programmable Switch
- Trigger-Input
- Output of Sampling Frequency
- All I/Os with Galvanic Isolation
- Micro-USB socket
- I/Os accessible via standard DSub-connectors
- High-Speed data storage to SDHC card

- optional OBDII controller *
- optional 4 LIN-busses *
- optional Audio support*

*under development

Internal Sensors

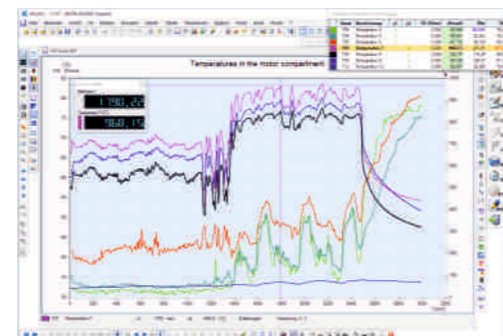
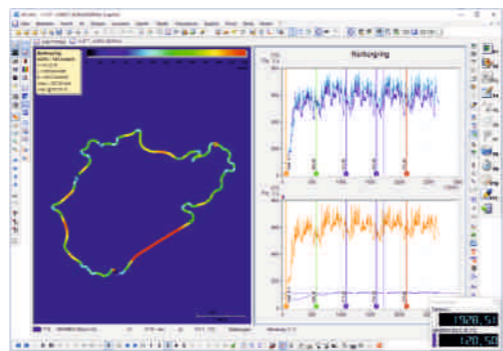
- high-gain / low noise GPS receiver with 10 / 15 Hz data rate
- GPS supporting GNSS / GLONASS / Beidou / Galileo
- Internal Inertial Sensor with 3 * Accelerometers / 3 * Gyros
- Internal barometric altimeter

General Specs

- High-Brightness TFT with PCAP-Touch 1000 cd/m2
- Display with Optical Bonding and Anti-Glare protection
- Temperature Range TFT -30 ... +80 C non-condensing
- Haptic Rotary Push Button Encoder as alternative HMI device

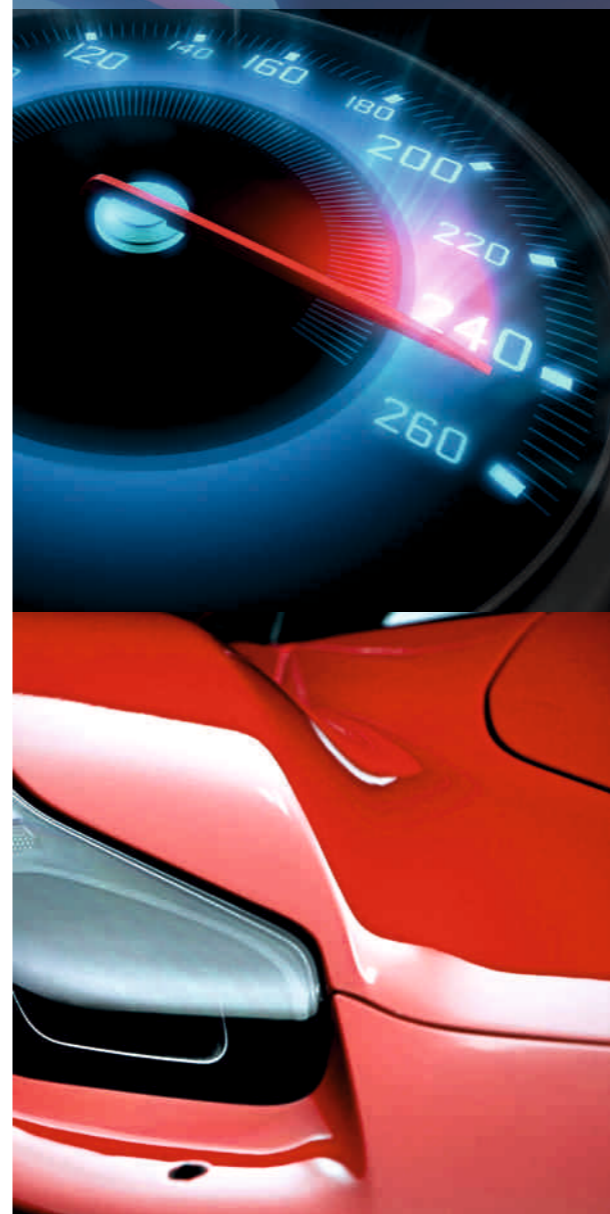
Power Supply and Sizes

- Automotive Power Supply range 10.5 ... 32 VDC
- Internal battery-free Back-up Technology
- Power Circuit with Galvanic Isolation
- Size 160 * 120 * 25 mm, Weight appx. 1.2 kg
- Temperature Range -20 ... + 60 C non-condensing



xProML Multi-Logger

the most stunning CAN-FD-Logger
you have ever seen



xpro products are completely designed and manufactured in Germany

reliable - modular - compact - simply world class!

Suchy Data Systems GmbH.
Am Steinacker 29
85253 Erdweg / Germany
+49 8138 69 74 240

xProML - Multi CAN-FD Datalogger

12 CAN-FD-Busses, GPS, IMU, Altimeter, Counter, OBD2, LIN

Suchy Data Systems

Mastering Vehicle Testing

With the **xProML** measurement tasks with 1200+ channels are accomplished in record time.

xProML logs data from up to 12 independent CAN-FD busses. This gives you a maximum of flexibility to neatly structure your tests – use a specific bus for vehicle ECU access, add several Thermocouple signal conditioners on another bus, read data from an external IMU or simply access another test instrument.

10.000 DMIPs of computing power assist you to handle even the most demanding test job in real-time and to store them on SD-card.

xProML comes in a super compact form factor – just a little bit more than the integrated 7" PCAP-Touch Display.

xProML - a rock-solid instrument

The modular structure allows updating the instrument continuously to the latest state of technology.

Already in the standard configuration xProML comes with additional input channels types which gives you even more possibilities to handle your test jobs:

- 8 high-speed binary / counter channels
- a high sensitivity 10 Hz GPS receiver
- internal Inertial Sensor plus a precision Altimeter
- Trigger-Input plus a programmable switch

Optionally the system will be expandable with

- 4 LIN-Busses
- Fully featured OBDII-controller
- Audio-Interface

As a standard for all SUCHY systems, every I/O channel is galvanically isolated for a maximum of reliability and safety.

xProML - a clever Low-Power-Solution - best when testing Electric Vehicles

xProML is equipped with a sophisticated power supply.

Overall power consumption is just 10-15 Watts – much less than any Windows based DAQ unit.

With **xProML** there is no need for cooling fans or a special cooling concept – just let it breathe in a free air stream.

And in case external power should fail, a clever AI-based battery-free back-up power will jump in and will keep the system alive for quite a while.

xProML - a revolutionary User Interface will speed up your tests

xProML is based on a Real-Time Operating system and therefore extremely fast.

Forget your worries on booting time of Windows!

xProML boots within 1-2 seconds right into your application.

Just start your vehicle's engine and xProML will already be ready to catch data almost instantaneously and fully automatically.

The user interface appears in the style of a mobile phone.

So you will be familiar to operate xProML within a minute.

Studying manuals? Forget about it!

xProML can be operated in two different styles:

- Using the PCAP touch
- Using the sensational **Haptic Rotary Push Button** controller

This SUCHY developed new revolutionary operating technology with a haptic controller will increase handling speed of the instrument dramatically. Also when driving a test car our style of this modern HMI is much more comfortable than fiddling with fingers on a touch screen. This is our contribution to increase safety in dense traffic proving grounds.

Running winter tests in the arctic cold?

Protecting your hands with gloves?

No problem with our fantastic new style to operate instrumentation!

You are not alone!

xProML is a member of SUCHY's complete infrastructure for collecting test data, process them and export results into another environment. Our software tools are not just data collectors – we provide a comfortable Job and Data Management system, which will organize thousands of individual tests and jobs in a smooth way.

Create new jobs within a minute, download them to **xProML** and you are ready to run your tests in a glimpse.

No matter where you will run your test cycles – either in Death Valley for a most demanding heat test or on a frozen lake in Sweden - **xProML** will be your reliable long-time companion.



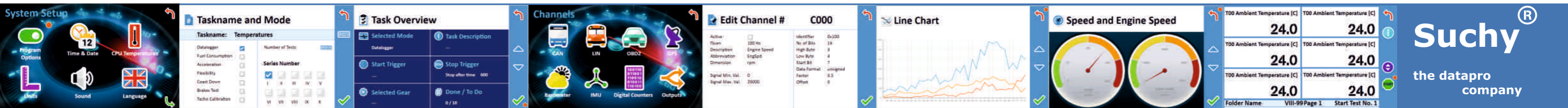
Temperatures

Performance Test

Data Logging

Brake Test

Driver's Aid



Suchy[®]
the datapro
company