

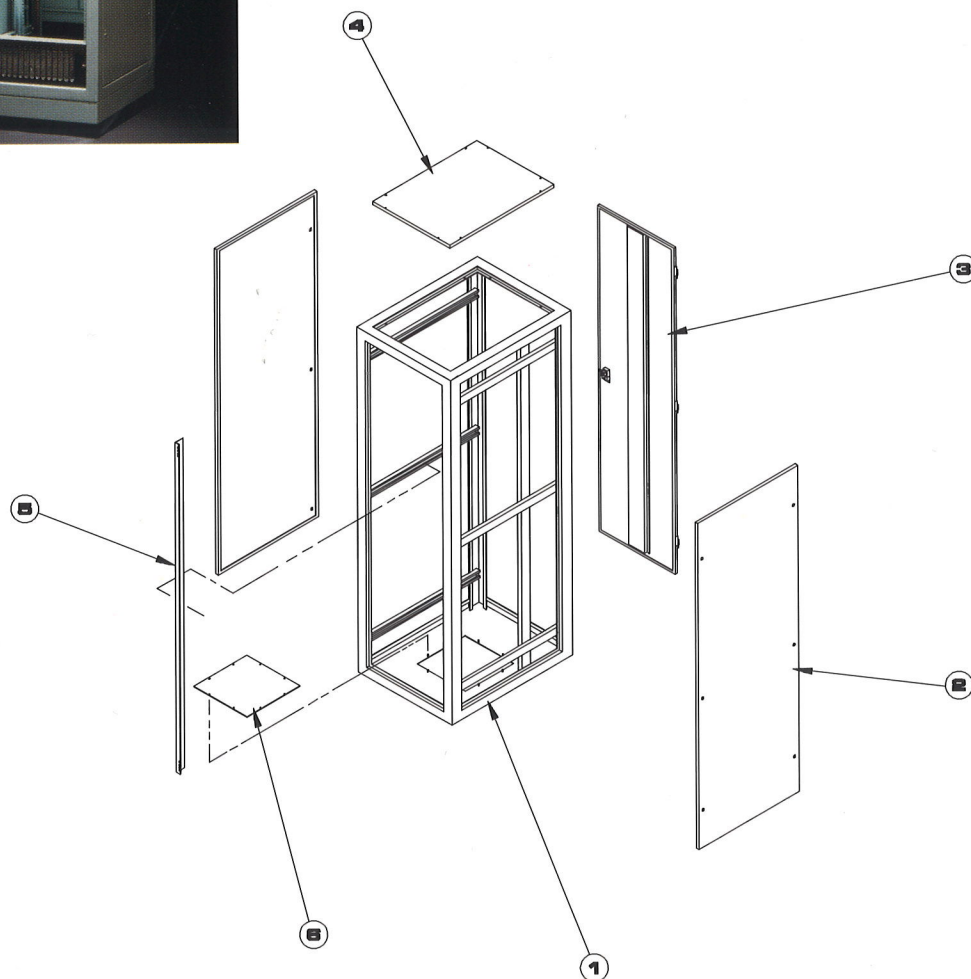
7000 Series



Heavy Duty Cabinet



Shown with optional blower, heavy-duty
caster base and insulated bus bar assembly.



Notes

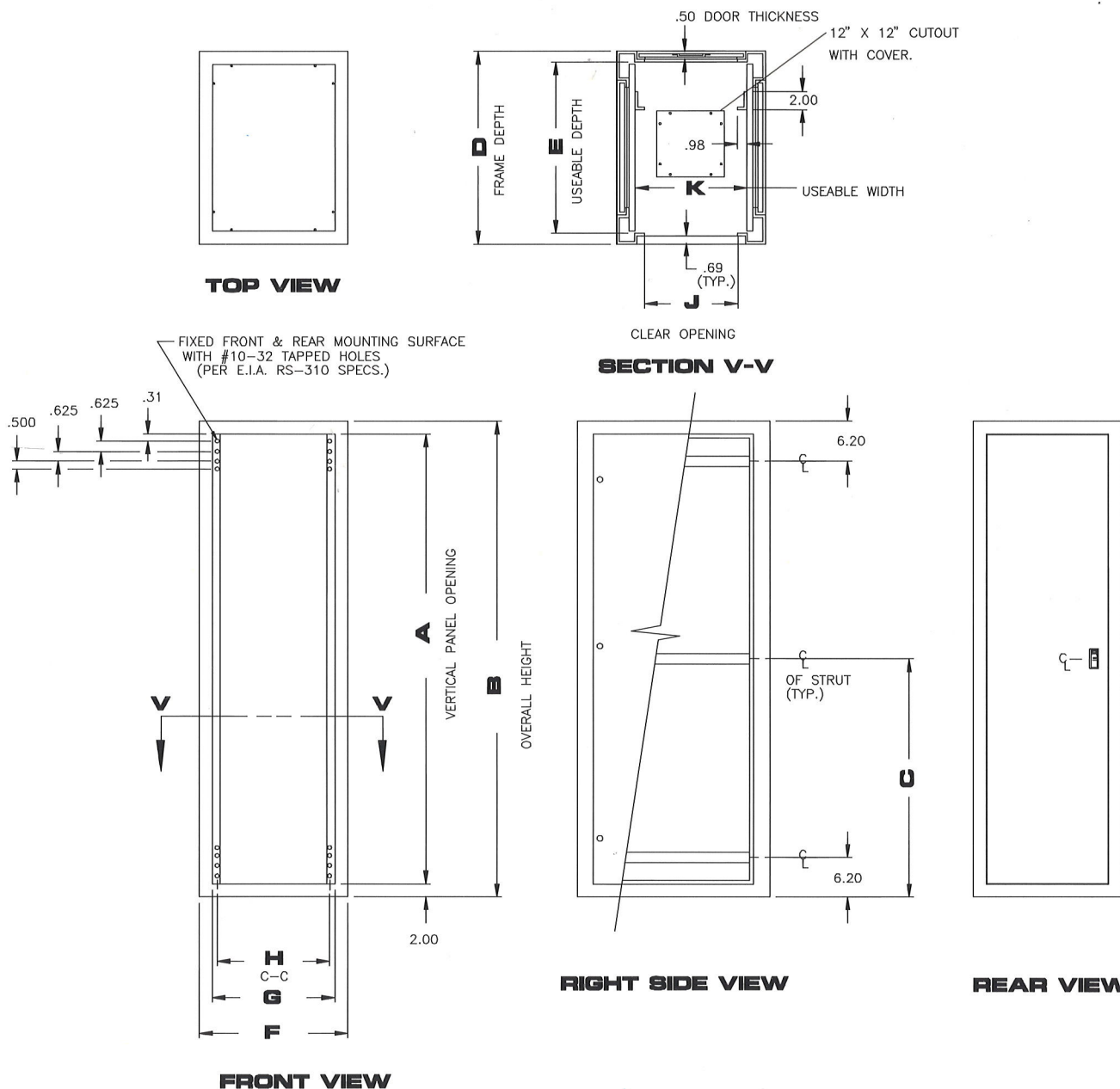
1. Cabinet frame (12 gauge C.R.S.)
2. Removable side panels (16 gauge C.R.S.)
3. Removable rear door (16 gauge C.R.S.)
4. Removable top cover (16 gauge C.R.S.)
5. Mounting angles (1 pair rear) are 12 gauge C.R.S. with .270 dia. clearance holes per EIA RS-310 specs. Finish: zinc & bright.
6. Removable bottom cover (12 gauge C.R.S.)

For Sales Service, Order Entry and Expediting: **(317) 897-7009**
For Engineering and/or Technical Assistance: **(317) 897-7010**



7000 Series

Heavy Duty Cabinet



All dimensions in inches unless stated otherwise

For Sales Service, Order Entry and Expediting: (317) 897-7009
 For Engineering and/or Technical Assistance: (317) 897-7010

7000 Series



Heavy Duty Cabinet

Ordering Information

VR7000 - XX - XX - XX - XX - XXXX - XXXXX

Cabinet Series

Panel Width

Specify	Actual Width Dim. G
19	19.13
24	24.13
30	30.13

Specify number of bays:
 01 for 1 bay
 02 for 2 bay
 03 for 3 bay

Cabinet Depth

Specify	Actual Depth Dim. D
24	24.00
30	30.00
36	36.00

Paint Color: Refer to
 page 54 for standard colors.

Options: Refer to 7000 Series
 options on pages 39-41.

Vertical Panel Opening

Specify	Actual Panel Opening Dim. A
26	26.38
31	31.63
35	35.13
42	42.13
52	52.63
61	61.38
70	70.13
78	78.88

Panel Width

Order Width	Frame Width F	Panel Width G	Hole C-C H	Clear Opening J	Useable Width K
19	23.13	19.13	18.31	17.94	19.91
24	28.13	24.13	23.31	22.94	24.91
30	34.13	30.13	29.31	28.94	30.91

Vertical Panel Opening

Order P.O.	Panel Opening A	Overall Height B	Strut Location C
26	26.38	30.38	—
31	31.63	35.63	—
35	35.13	39.13	—
42	42.13	46.13	—
52	52.63	56.63	28.31
61	61.38	65.38	32.69
70	70.13	74.13	37.06
78	78.88	82.88	41.44

Cabinet Depth

Order Depth	Frame Depth D	Useable Depth E
24	24.00	22.41
30	30.00	28.41
36	36.00	34.41

All dimensions in inches unless stated otherwise

For Sales Service, Order Entry and Expediting: **(317) 897-7009**
 For Engineering and/or Technical Assistance: **(317) 897-7010**



7000 Series Options

<p>LOUVERED SIDE PANEL TOP</p> <p>3 COLUMNS OF 10</p> <p>TO SPECIFY, USE OPTION NUMBER</p> <p>70LSPT</p>	<p>LOUVERED SIDE PANEL BOTTOM</p> <p>3 COLUMNS OF 10</p> <p>TO SPECIFY, USE OPTION NUMBER</p> <p>70LSPB</p>	<p>LOUVERED SIDE PANEL TOP & BOTTOM</p> <p>6 COLUMNS OF 10</p> <p>TO SPECIFY, USE OPTION NUMBER</p> <p>70LSPTB</p>
<p>LOUVERED REAR DOOR TOP</p> <p>2 COLUMNS OF 15</p> <p>TO SPECIFY, USE OPTION NUMBER</p> <p>70LRDT</p>	<p>LOUVERED REAR DOOR BOTTOM</p> <p>2 COLUMNS OF 15</p> <p>TO SPECIFY, USE OPTION NUMBER</p> <p>70LRDB</p>	<p>LOUVERED REAR DOOR TOP & BOTTOM</p> <p>4 COLUMNS OF 15</p> <p>TO SPECIFY, USE OPTION NUMBER</p> <p>70LRDTB</p>
<p>LOUVERED TOP PAN</p> <p>TO SPECIFY, USE OPTION NUMBER</p> <p>70LTP</p>	<p>KEY LOCK</p> <p>TO ORDER REAR DOOR WITH KEYLOCK, SPECIFY 70ARDKL</p> <p>TO ORDER FRONT DOOR WITH KEYLOCK, SPECIFY 70FDFKL</p>	
<p>LOUVERS</p>		

For Sales Service, Order Entry and Expediting: (317) 897-7009
 For Engineering and/or Technical Assistance: (317) 897-7010

7000 Series Options



<p>FACE MOUNTED FRONT DOOR</p> <p>TO SPECIFY, USE OPTION NUMBER</p> <p>70FMD</p>	<p>STANDARD DUTY LIFTING EYES</p> <p>TO SPECIFY, USE OPTION NUMBER</p> <p>70E8D</p> <p>LIFTING EYE (3/8-16 X 1.0" DIA. EYELET) EYEBOLT LOAD CAPACITY 1400 LBS.</p>
<p>STATIONARY BASE</p> <p>TO SPECIFY, USE OPTION NUMBER</p> <p>708B</p>	<p>HEAVY DUTY LIFTING EYES</p> <p>TO SPECIFY, USE OPTION NUMBER</p> <p>70EHD</p> <p>LIFTING EYE (1/2-13 X 1.25" DIA. EYELET) EYEBOLT LOAD CAPACITY 2600 LBS.</p>
<p>CASTER BASE</p> <p>SEE CHART ON PAGE 38 FOR DIMENSIONS "D" & "F".</p>	<p>MEDIUM DUTY CASTERS</p> <p>4.0" DIA. CASTER, 200 LB. CAPACITY (EACH CASTER) FRONT SWIVEL, REAR RIGID TO SPECIFY, USE OPTION NUMBER</p> <p>70CMD</p> <p>TO ORDER ALL SWIVEL CASTERS USE OPTION NO.</p> <p>70CMD8</p>
<p>MEDIUM DUTY CASTER BASE</p> <p>SECTION 8-8</p> <p>4.0" DIA. CASTER, 200 LB. CAPACITY (EACH CASTER) FRONT SWIVEL, REAR RIGID TO SPECIFY, USE OPTION NUMBER</p> <p>70CBMD</p> <p>TO ORDER ALL SWIVEL CASTERS USE OPTION NO.</p> <p>70CBMDS</p>	<p>HEAVY DUTY CASTERS</p> <p>4.0" DIA. CASTER, 300 LB. CAPACITY (EACH CASTER) FRONT SWIVEL, REAR RIGID TO SPECIFY, USE OPTION NUMBER</p> <p>70CHD</p> <p>TO ORDER ALL SWIVEL CASTERS USE OPTION NO.</p> <p>70CHDS</p>
<p>HEAVY DUTY CASTER BASE</p> <p>SECTION 8-8</p> <p>4.0" DIA. CASTER, 300 LB. CAPACITY (EACH CASTER) FRONT SWIVEL, REAR RIGID TO SPECIFY, USE OPTION NUMBER</p> <p>70CBHD</p> <p>TO ORDER ALL SWIVEL CASTERS USE OPTION NO.</p> <p>70CBHDS</p>	

For Sales Service, Order Entry and Expediting: (317) 897-7009
 For Engineering and/or Technical Assistance: (317) 897-7010



7000 Series Options

<p align="center">STANDARD MOUNTING ANGLE</p> <p>TO SPECIFY, USE OPTION NUMBER</p> <p align="center">70MA</p> <p>ONE PAIR OF MOUNTING ANGLES IS PROVIDED WITH THE CABINET UNLESS OTHERWISE SPECIFIED.</p> <p>TO ORDER ADDITIONAL MOUNTING ANGLES, WRITE THE OPTION NUMBER TIMES THE NUMBER OF PAIR DESIRED.</p> <p>EXAMPLE; 70MA X 2</p>		<p align="center">OFFSET MOUNTING CHANNEL</p> <p>TO SPECIFY, USE OPTION NUMBER</p> <p align="center">700MC</p> <p>TO REPLACE THE STANDARD MOUNTING ANGLES WITH OFFSET MOUNTING CHANNELS, PLACE "R" IN FRONT OF THE OPTION NUMBER.</p> <p>EXAMPLE; R700MC</p> <p>TO ORDER OFFSET MOUNTING CHANNELS IN ADDITION TO MOUNTING ANGLES, WRITE THE OPTION NUMBER TIMES THE NUMBER OF PAIR DESIRED.</p> <p>EXAMPLE; 700MC X 2</p>	
<p align="center">MOUNTING "Z" RAIL</p> <p>TO SPECIFY, USE OPTION NUMBER</p> <p align="center">70MZR</p> <p>TO REPLACE THE STANDARD MOUNTING ANGLES WITH MOUNTING "Z" RAILS, PLACE "R" IN FRONT OF THE OPTION NUMBER.</p> <p>EXAMPLE; R70MZR</p> <p>TO ORDER MOUNTING "Z" RAILS IN ADDITION TO MOUNTING ANGLES, WRITE THE OPTION NUMBER TIMES THE NUMBER OF PAIR DESIRED.</p> <p>EXAMPLE; 70MZR X 2</p>		<p align="center">MOUNTING CHANNEL</p> <p>TO SPECIFY, USE OPTION NUMBER</p> <p align="center">70MC</p> <p>TO REPLACE THE STANDARD MOUNTING ANGLES WITH MOUNTING CHANNELS, PLACE "R" IN FRONT OF THE OPTION NUMBER.</p> <p>EXAMPLE; R70MC</p> <p>TO ORDER MOUNTING CHANNELS IN ADDITION TO MOUNTING ANGLES, WRITE THE OPTION NUMBER TIMES THE NUMBER OF PAIR DESIRED.</p> <p>EXAMPLE; 70MC X 2</p>	
<p align="center">POWERSTRIP</p> <p>TO SPECIFY, USE OPTION NUMBER</p> <p align="center">70PS</p>		<p align="center">BUS BAR</p> <p>TO SPECIFY, USE OPTION NUMBER</p> <p align="center">70BB</p>	
<p align="center">REAR HORIZONTAL SPACE DIVIDER</p> <p>TO SPECIFY, USE OPTION NUMBER</p> <p align="center">70HSD X P.O.</p> <p>1.75 P.O.</p> <p align="center">REAR</p>			

For Sales Service, Order Entry and Expediting: (317) 897-7009
 For Engineering and/or Technical Assistance: (317) 897-7010