



## CHARACTERISTICS

### Pump pressure:

- 35 bar (507 psi)

### Flow rate:

- 6,0 – 17,0 litre/min

### Range of viscosity:

- From 20 to 750 mm<sup>2</sup>/s

## GPU3

Gear pumps from 6 to 17 litres flow rate and also a maximum pumping pressure of 35 bar (507 psi).

This pump is designed for base mount.



### General

Type	Base mount
Ambient temperature	From 32 to 176°F (from 0 to 80 °C)
Protection class as per EN60529	IP 44

### Hydraulic system

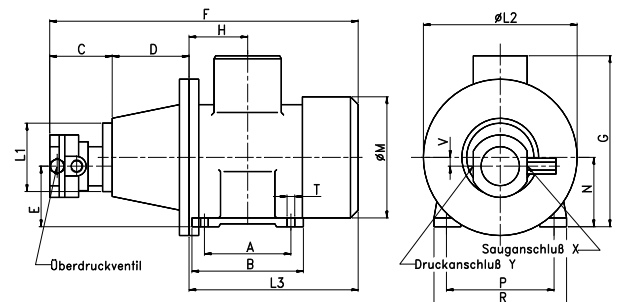
Operating pressure	35 bar (507 psi)
Flow rate	6,0 – 17,0 l/min
Operating medium	Mineral oil
Range of viscosity	From 20 to 750 mm <sup>2</sup> /s

### Drive

Type of drive	Electrical
Supply voltage	3~ 400V
Frequency	50 Hz
Connection	Terminal board

## IDEAL FOR

- Pumping of hydraulic oil



## Ordering information

Flow rate [l/min]	Engine output [kW]	Dimensions [mm]										Order number
		A	B	C	D	E	F	G	H	L1	L2	
6	0,55	100	125	85	100	67	394	192	67	100	200	P30014762
		L3	M	N	P	R	T	V	X	Y		
9	0,75	100	125	85	100	67	394	192	67	100	200	P30014763
		209	139	80	125	168	10	13	3/8"	3/8"		
13	1,1	100	130	100	100	75	426	210	70	120	200	P30014764
		226	157	90	140	178	10	15	1/2"	1/2"		
17	1,5	125	155	100	100	75	448	210	70	120	200	P30014765
		248	157	90	140	178	10	15	1/2"	1/2"		

## APPLICATIONS

- Oil circulation systems

- Hydraulic fluid units