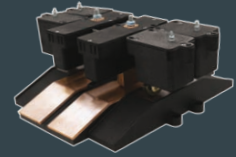




ChargingContacts

NANO **NANO⁺** **ENDURO⁺**

 **CONDUCTIX**
wampfler



NANO

NANO⁺

ENDURO⁺

Test Cycles

Up to 100,000

>1,000,000

>1,000,000

UL Compliance

UL 583 recognized component

UL 583 recognized component

UL 583 recognized component

Pilot Contacts

Yes

No

Yes + CANBus Tested

Voltage

Up to 60 VDC/ 25 VAC

Up to 60 VDC/ 25 VAC

60 VDC limit of UL583 standard
(Designed to meet 150 VDC)

Ampacities

20A to 300A

5A-25A, 50A, 75A

100A to 600A

Position Tolerance

X: ± 5mm | Y: ± 5 mm | (Z axis)
depression: 1mm with 4mm of travel

X: ± 5 mm, Y: ± 28 mm, (Z axis)
depression: 1mm with 4mm of travel

X: ± 15 mm, Y: ± 15 mm, (Z axis)
depression: 2mm with 18mm of travel

Modular

No

No

Yes

Shunt

External

Internal

Internal

Mount

Floor, Wall, Side, Bottom

Floor, Wall, Side, Bottom

Floor, Wall, Side, Bottom

Operating Temp.

-20°C, -4°F to 100°C, 212°F

-30°C, -22°F to 130°C, 266°F

-30°C, -22°F to 120°C, 248°F

Market Applications

Manufacturing
Warehouse and Distribution
AGV's AGC's AMR's, Service Robots
Shuttles
Amusement Park Rides
Custom Engineered Configurations

Manufacturing
Warehouse and Distribution
AGV's AGC's AMR's, Service Robots
Shuttles
Amusement Park Rides

Manufacturing
Warehouse and Distribution
AGV's AGC's AMR's, Service Robots
Shuttles
Amusement Park Rides

Nano

Conductix-Wampfler's **Nano Series** of Charging Contacts provides a compact solution for charging systems.

The **Nano Series** offers a smaller footprint than other charging contacts in the market, with up to a 75% smaller collector and up to a 66% smaller base plate. With a chamfered edge design, the **Nano Series** ensures that only long-life wear-resistant components meet each other. The **Nano Series** Charging Contact is a compact, modular design ideal for applications where space is a premium.

Features

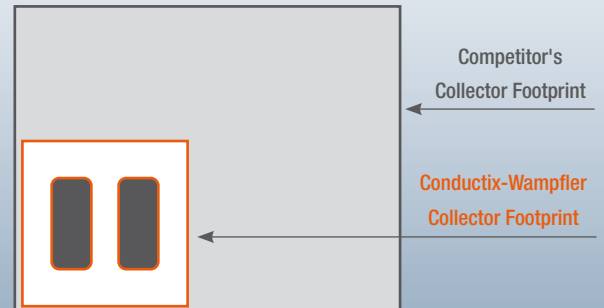
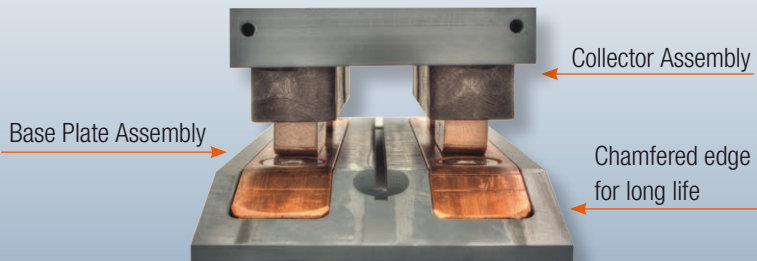
Compact Footprint – Up to 75% smaller collector, up to 66% smaller base plate.

Long Life – The chamfered edge design ensures that only long-life wear-resistant components come in contact with each other.

Charging Integrity – The brushes never come in contact with the plastic, eliminating the need to have cleaning brushes to ensure charging integrity.



Compact Footprint



Nano⁺

The **Nano⁺** is the evolution of the original Nano model, offering an off-the-shelf, cost-effective solution at 25amp, 50amp, and 75amp configurations. Nano⁺ is built on the same industry-first zero maintenance chamfered edge base and combines that with the patent-pending shunt technology found in the Enduro⁺ that has tested for over 1 million worry-free cycles.

Features

Off The Shelf Configuration – 5amp-25amp, 50amp, 75amp.

Compact Footprint – Allows for ultimate design flexibility.

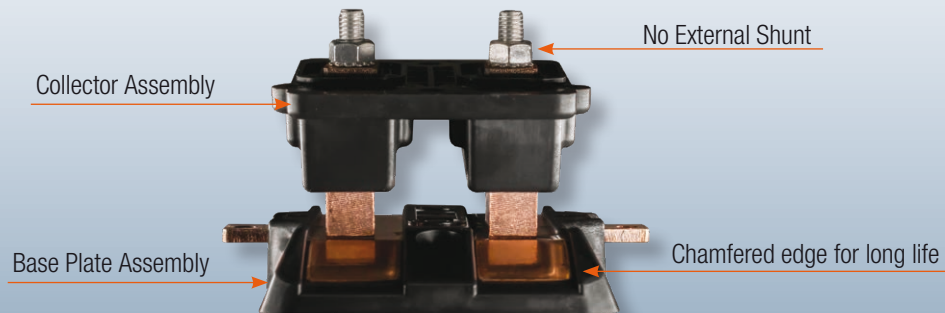
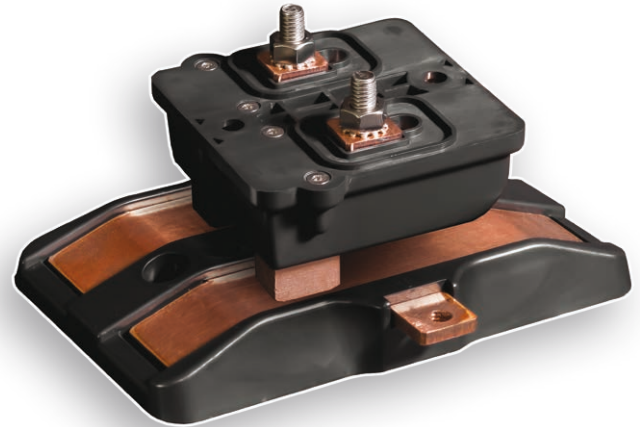
Increased Misalignment Tolerances – For improved contact connection.

High Charging Rate – Minimizing wasted charging downtime.

No External Shunt – Increased ease of Installation with simplified lug connections

Chamfered Edge – Ensures clean contact surface for superior power transfer.

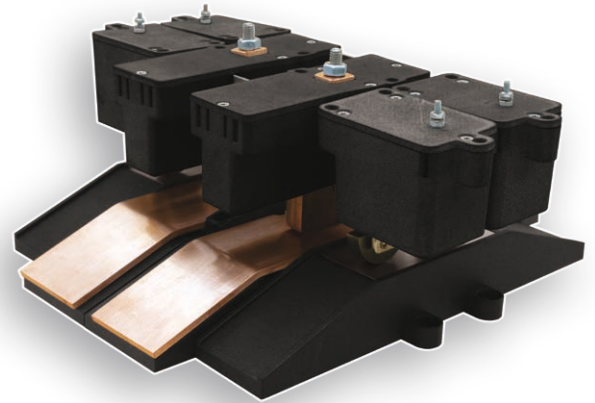
Durability – Shunt tested to 1 million worry-free cycles (Nano⁺ base over 2 million cycles).



Enduro⁺

Conductix-Wampfler's **Enduro⁺ Series** of Charging Contacts maximize productivity by capitalizing on opportunity charging wherever equipment is stationary.

The Enduro⁺ Charging Contacts allow for equipment to be charged at current capacities of 100 to 600 amps maximizing uptime and ROI. These durable charging contacts have a wear-resistant chamfered edge that provides a high charging rate while also reducing debris' negative impact. Highly tolerant to misalignment, our Enduro⁺ Charging Contacts are effective for a wide range of battery-powered equipment, such as automated guided vehicles (AGVs), automated guided carts (AGCs), shuttles, industrial fork lifts, and more.



Features

Modular Design – Allows for ultimate design flexibility.

Increased Misalignment Tolerances – For improved contact connection.

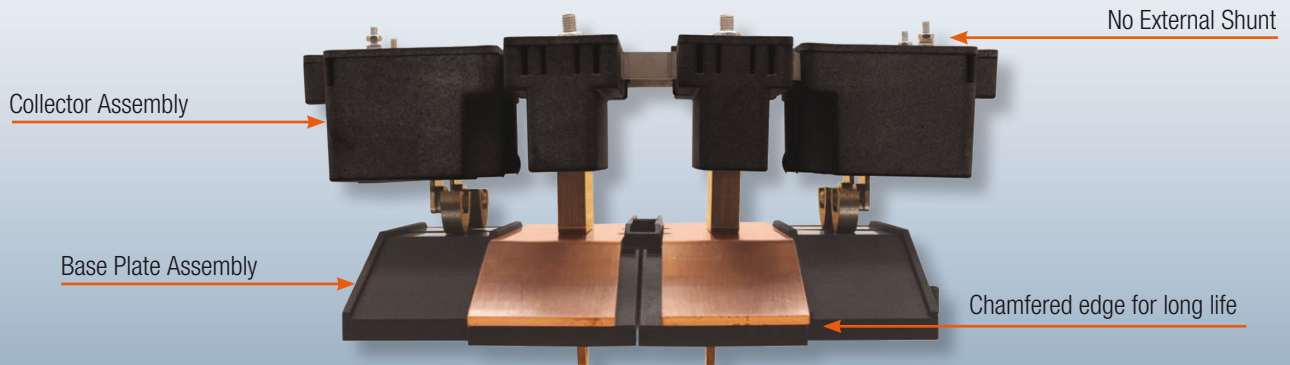
High Charging Rate - Minimizing wasted charging downtime.

CANbus tested pilots - Maximize charging profile efficiency with communication link.

No External Shunt - Increased ease of installation with simplified lug connections.

Chamfered Edge - Ensures clean contact surface for superior power transfer.

Patent-Pending Shunt Design - Tested to 1 million cycles creating a long lasting, worry free solution.



www.conductix.us

For more information on Charging Contacts please contact us.

USA / LATIN AMERICA

10102 F Street
Omaha, NE 68127

CANADA

1435 Norjohn Court
Unit 5
Burlington, ON L7L 0E6

MÉXICO

Calle Treviño 983-C
Zona Centro
Apodaca, NL México 66600

BRAZIL

Rua Dois, 493
Itu, São Paulo, Brasil
CEP: 13312-820
Customer Support

Customer Support
Phone +1-800-521-4888

Phone +1-402-339-9300
Fax +1-402-339-9627

info.us@conductix.com
latinamerica@conductix.com

Customer Support
Phone +1-800-667-2487

Phone +1-450-565-9900
Fax +1-450-951-8591

info.ca@conductix.com

Customer Support
Phone (+52 81) 1090 9519
(+52 81) 1090 9025
(+52 81) 1090 9013

Fax (+52 81) 1090 9014

info.mx@conductix.com

Phone (+55 11) 4813 7330

Fax (+55 11) 4813 7330

info.br@conductix.com

