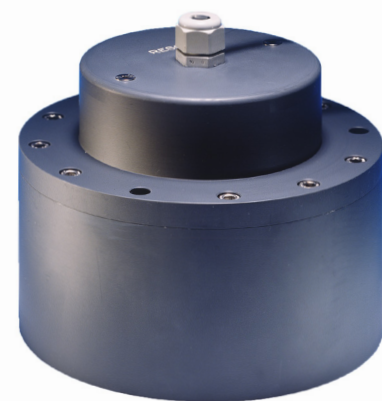


# TC2122

## Dual-Frequency Survey Echosounder Transducer

Model TC2122 is a 33kHz and 200kHz dual-frequency transducer ideal for navigation and hydrographic echosounder systems. The transducer has excellent piezoceramic elements which will ensure the highest reliability and quality in echosounding. The transducer will fit Teledyne RESON SW 60/28/6029 housing and Teledyne RESON steel housings.



### TECHNICAL SPECIFICATIONS

<b>Resonant frequency:</b>	33kHz ±2kHz, 200kHz ±5kHz
<b>Transmitting sensitivity:</b>	168dB ±3dB at 33kHz, 174dB ±3dB at 200kHz (re 1µPa/V at 1m)
<b>Receiving sensitivity:</b>	-177dB ±3dB at 33kHz, -187dB ±3dB at 200kHz (re 1µPa/V)
<b>Impedance:</b>	80ohm ±24ohm at 33kHz and 200kHz
<b>Beam width:</b>	22°±2° at 33kHz, 9.1°±1° at 200kHz
<b>Beam shape:</b>	Conical
<b>Max input power:</b>	1000W at 33kHz, 450W at 200kHz (at 1% duty cycle)
<b>Operating depth:</b>	30m
<b>Survival depth:</b>	50m
<b>Operating temperature range:</b>	-2°C to +35°C
<b>Storage temperature range:</b>	-30°C to +50°C
<b>Weight in air, with cable:</b>	5kg
<b>Housing:</b>	PVC
<b>Cable (length and type):</b>	33m FALMAT Type FM088095-7, 4x1 (2 x twisted pair) PUR Jacket
	WATER BLOCK, Kevlar Braid 800lbs breaking strength (O.D. 11mm) - Terminated with E20 Connector (Connector: GT272254-32050, Teledyne P/N 1012320-DK)

### FEATURES

- Narrow beams
- High acoustical performance
- Compact design
- Compatible with Teledyne RESON SW60/28/6029 housing
- Electrical compatible with most 33kHz and 200kHz echosounders

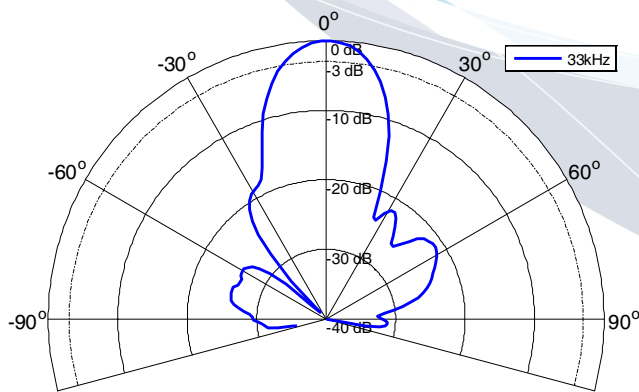


# Transducer TC2122

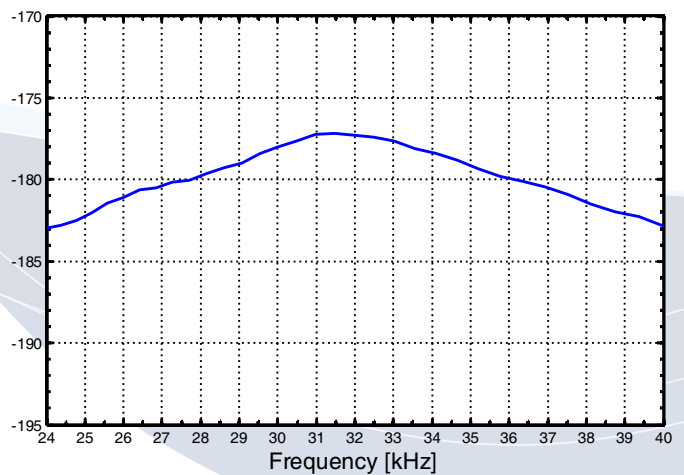
## Dual-Frequency Survey Echosounder Transducer

### Typical graphs 33kHz

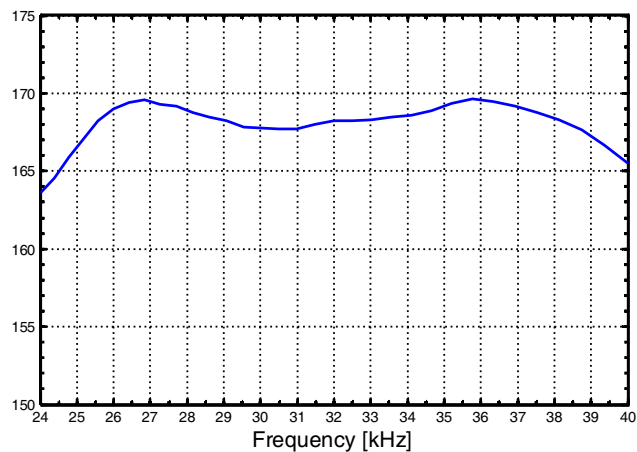
Horizontal Directivity Pattern



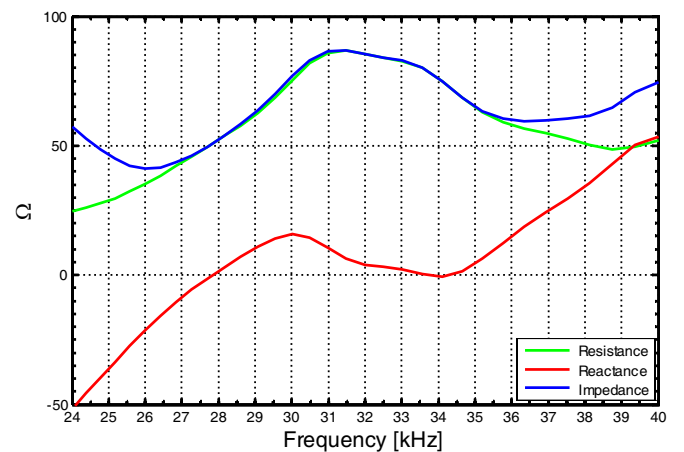
Receiving Sensitivity [dB re 1V/μPa @ 1m]



Transmitting Sensitivity [dB re 1μPa/V @ 1m]



Impedance

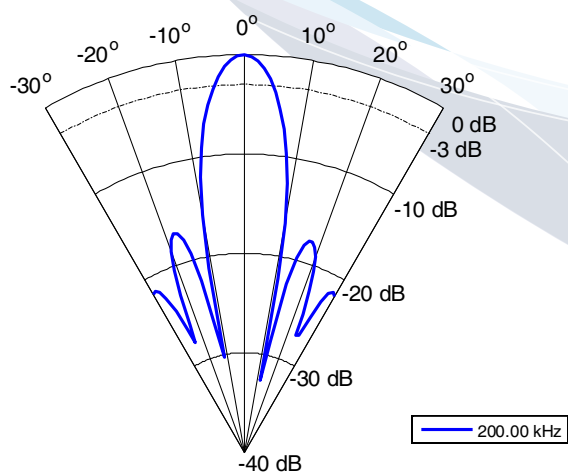


# Transducer TC2122

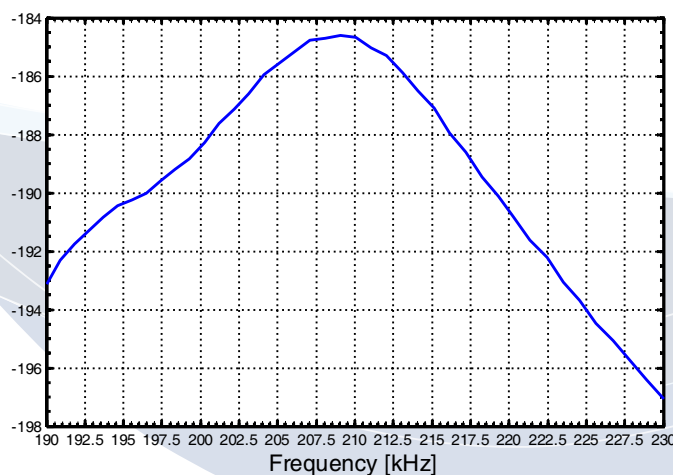
## Dual-Frequency Survey Echosounder Transducer

### Typical graphs 200kHz

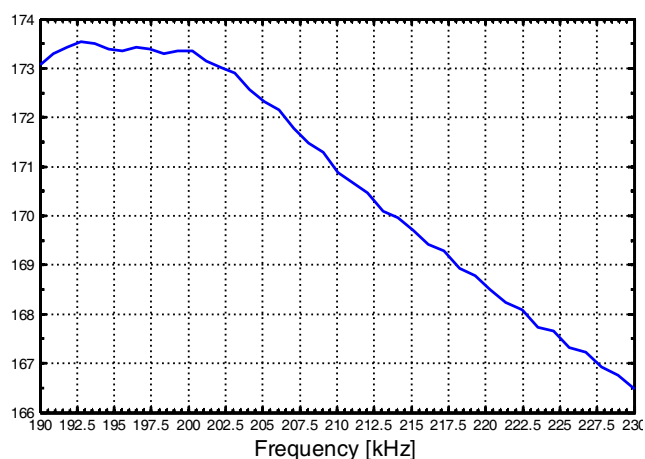
Horizontal Directivity Pattern



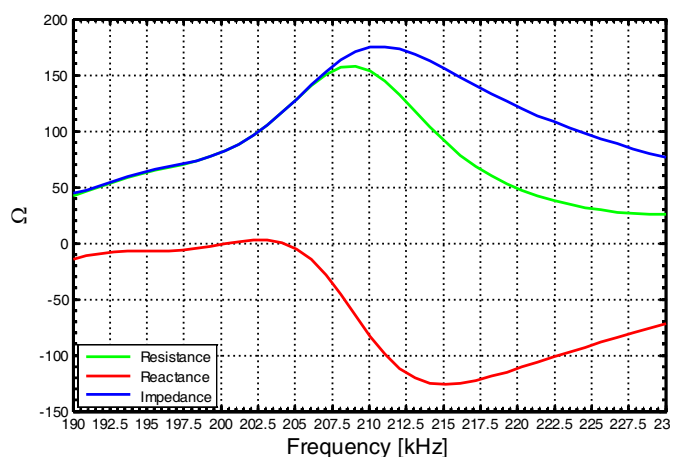
Receiving Sensitivity [dB re 1V/μPa @ 1m]



Transmitting Sensitivity [dB re 1μPa/V @ 1m]

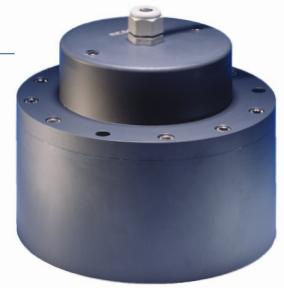


Impedance

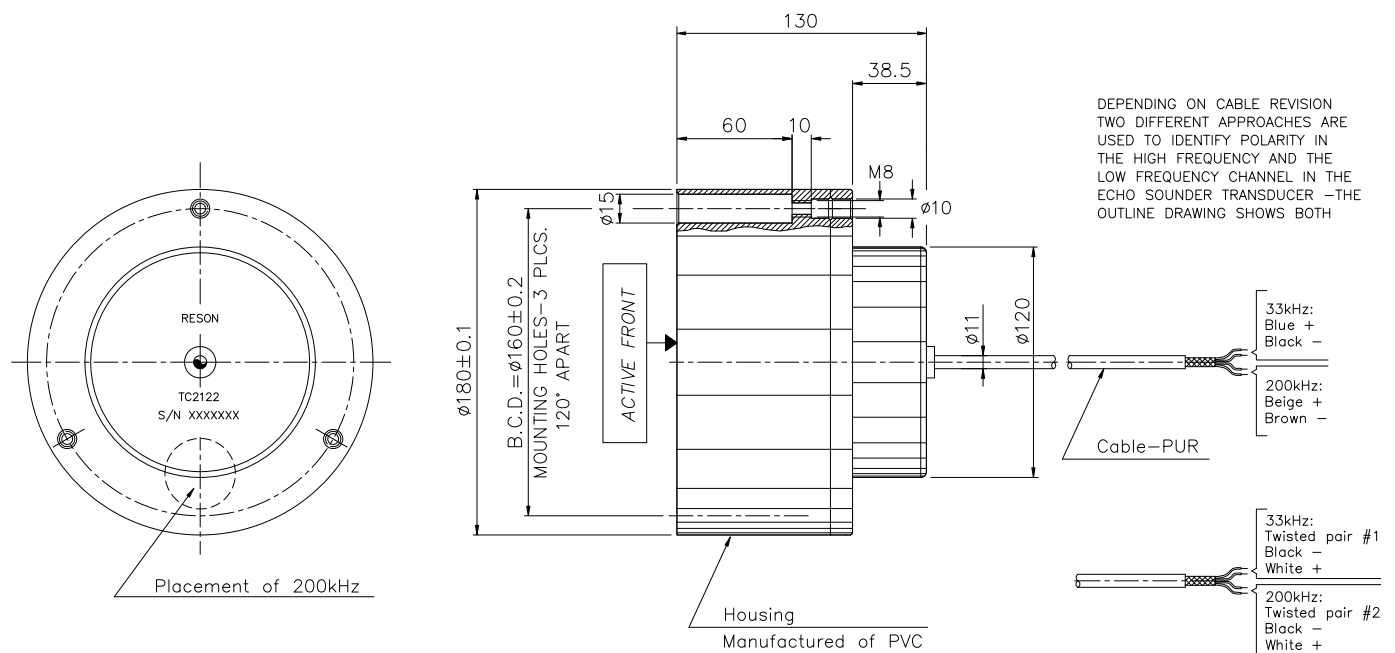


# Transducer TC2122

## Dual-Frequency Survey Echosounder Transducer



### Outline Dimensions



**TELEDYNE MARINE**  
**RESON**  
 Everywherelook™

[www.teledynemarine.com/reson](http://www.teledynemarine.com/reson)

Tel. +45 4738 0022 (Europe) • Tel: +1 805 964 6260 (USA)

Email: [reson@teledyne.com](mailto:reson@teledyne.com)