

C345 SERIES

PNEUMATIC VALVES



- 125 PSI AIR —
- 4-WAY, 2 POSITION, $\frac{3}{8}$ NPT —
- SINGLE OR DOUBLE AIR PILOT —
- SINGLE OR DOUBLE SOLENOID —
- IN-LINE, BRACKET AND MANIFOLD MOUNTING —
- RUGGED MACHINE TOOL QUALITY & CONSTRUCTION —



CONTROL LINE EQUIPMENT, INC.

14750 Industrial Parkway • Cleveland, Ohio 44135
(216) 433-7766 • FAX: (216) 433-7664

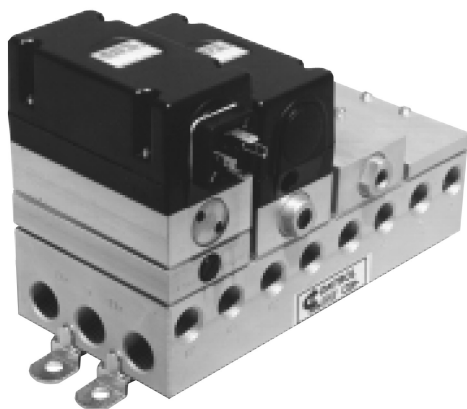
AIR PILOTED VALVES



The C345 Air Piloted Valves are a rugged yet compact valve which feature Delrin Sleeve construction to reduce friction for smooth performance and long life. They are available as single or double air piloted, and can be mounted in-line, on CMX Series Manifolds or with Mounting Brackets.

Model	Description	Symbol
C345-4A	4-way, 2 position, air piloted, spring return, in-line mount	
C345-4A2	4-way, 2 position, double air piloted, in-line mount	
CM345-4A	4-way, 2 position, air piloted, spring return, manifold mount	
CM345-4A2	4-way, 2 position, double air piloted, manifold mount	

See page 4 for dimensional information



CMX SERIES MANIFOLDS

Manifolds permit centralized location of control valves, simplify plumbing and reduce installation costs. Valves and manifolds can be sub-assembled and placed in the end product as a complete, unitized control unit, thereby saving the time and labor involved with installing valves individually.

CMX series manifolds are of rugged, one-piece extruded aluminum construction and are available in models for two to seven stations. A CMX manifold has a common inlet and two common (captured) exhausts. Captured exhaust is desirable when exhausting medium must be piped away to avoid contamination of the ambient area, as in clean rooms.

Valves mount in either of two positions. The position of the electrical connections can be changed by reversing the valve on the manifold.

A CMX series manifold will accept any combination of single or double solenoid and single or double air piloted CM345 valves.

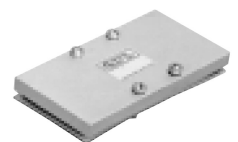
The manifold is furnished with four mounting brackets and screws.

MANIFOLDS, OPTIONS AND ACCESSORIES



PLUG-IN ELECTRICAL CONNECTOR, CODE 39

This optional plug-in electrical connector simplifies wiring and speeds installation. The HS-4 socket for single or double solenoid valves is not supplied with Code 39. Order separately. Cord not included.



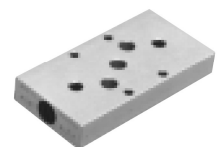
BLOCK-OFF PLATE, 8-39A

This block-off plate may be used either to suspend use of a station or to reserve a station for future use.



MOUNTING BRACKET, 8-45A

The 8-45A mounting bracket comprises of two "Z" type shouldered mounting brackets and two $\frac{5}{16}$ -18 x $\frac{3}{8}$ long screws. Bracket and screws are plated steel.



SPEED CONTROL, CODE 74

This unit, for use with CM345 series manifold valves, provides controlled exhaust flow in both modes of valve operation. The exhaust is ported to the manifold and may be captured.

DIMENSIONS

