

3-PORT, CENTER

ORDERING NUMBER				
MFR - 24 - 2 - X - X - X - X				
			PURITY	
			MATERIAL	
			CONFIGURATION	
			NUMBER OF PORTS	
			SEAL TYPE	
			BASE SIZE	

BASE SIZE	SEAL TYPE	NUMBER OF PORTS	CONFIGURATION	ORDERING NUMBER
1.500"	W-SEAL	2-PORTS	SIDE	MFR-24-2-2-1-X-X
		3-PORTS	SIDE	MFR-24-2-3-1-X-X
			CENTER	MFR-24-2-3-2-X-X

MATERIAL DESIGNATORS

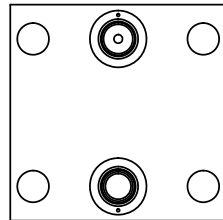
S = 316L SST SEMI F20
A = 316L
B = 316L SST SEMI F20 VIM/VAR
N = NICKEL 200
M = NICKEL 400
H = NICKEL ALLOY C22

PURITY DESIGNATORS

S = STANDARD FINISH
H = HIGH PURITY
U = ULTRA-HIGH PURITY

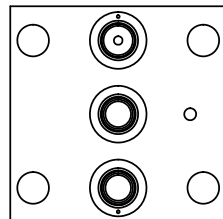
*WHEN ORDERING, MUST SPECIFY ORIFICE DIAMETER [D] OR THE FOLLOWING:
GAS TYPE, FLOW RATE, INLET PRESSURE, AND OUTLET PRESSURE.

TALON
MFR-24-2-1-X
ORIFICE WITH PRESSURE OUTLET

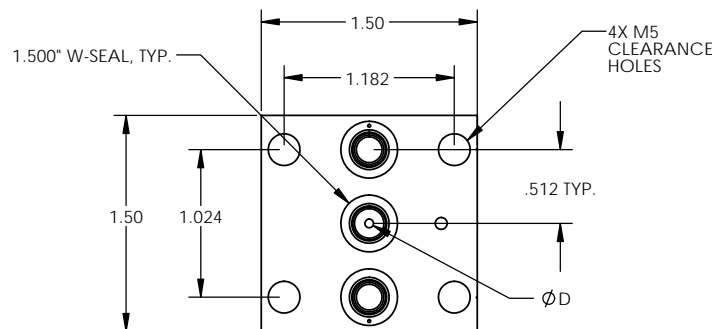


2-PORT, SIDE

TALON
MFR-24-2-1-X
ORIFICE WITH PRESSURE OUTLET





3-PORT, SIDE



3-PORT, CENTER

.25

- NOTES:
- DRAWINGS FOR SPECIFICATION PURPOSES AND ARE FOR REFERENCE ONLY.
 - ALL VERSIONS OF THE DRAWING ARE SUPERSEDED BY THIS RELEASE AND SUBJECT TO CHANGE WITHOUT NOTIFICATION.

EFFECTIVE DATE: 2/6/2017		 INNOVATION WITH PRECISION		1003 INDUSTRIAL DRIVE SAUK RAPIDS, MN 56379 VOICE: 320-251-0390 FAX: 320-251-5810
INTERPRET DRAWING PER: ASME Y14.5 - 2009				
THIRD ANGLE PROJECTION 		DESCRIPTION: MODULAR FLOW RESTRICTOR 1.500" W-SEAL		
PROPRIETARY AND CONFIDENTIAL THE INFORMATION CONTAINED IN THIS DRAWING IS THE SOLE PROPERTY OF TALON INNOVATIONS, INC. ANY REPRODUCTION IN PART OR AS A WHOLE WITHOUT THE WRITTEN PERMISSION OF TALON INNOVATIONS, INC. IS PROHIBITED.		SIZE C	PART NUMBER: MFR-24-2-X-X-X-X	
		DO NOT SCALE DRAWING		SCALE: 3:2 SHEET 1 OF 1