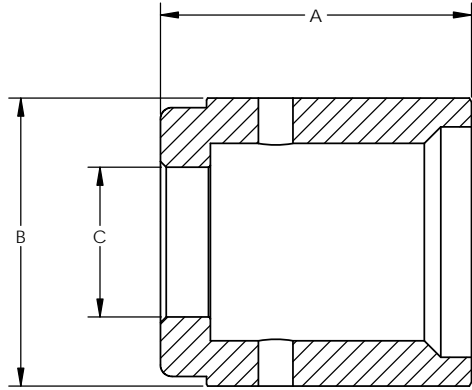


ORDERING NUMBER

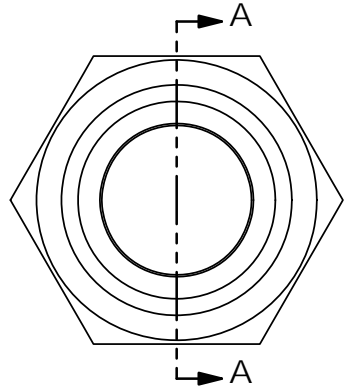
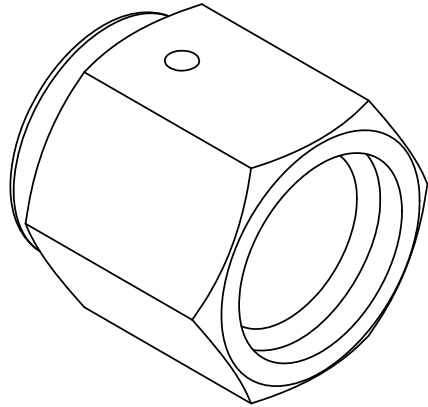
5035 - 4

FACE SEAL SIZE



FACE SEAL SIZE	ORDERING NUMBER	DIMENSIONS		
		[A]	[B]	[C]
1/4	5035-4	0.81	3/4	0.39



SECTION A-A



- NOTES:
- DRAWINGS FOR SPECIFICATION PURPOSES AND ARE FOR REFERENCE ONLY.
 - ALL VERSIONS OF THE DRAWING ARE SUPERSEDED BY THIS RELEASE AND SUBJECT TO CHANGE WITHOUT NOTIFICATION.

EFFECTIVE DATE: 2/6/2017		 INNOVATION WITH PRECISION		1003 INDUSTRIAL DRIVE SAUK RAPIDS, MN 56379 VOICE: 320-251-0390 FAX: 320-251-5810	
INTERPRET DRAWING PER: ASME Y14.5 - 2009					
THIRD ANGLE PROJECTION 					
PROPRIETARY AND CONFIDENTIAL THE INFORMATION CONTAINED IN THIS DRAWING IS THE SOLE PROPERTY OF TALON INNOVATIONS, INC. ANY REPRODUCTION IN PART OR AS A WHOLE WITHOUT THE WRITTEN PERMISSION OF TALON INNOVATIONS, INC. IS PROHIBITED.		DESCRIPTION: HIGH FLOW FEMALE NUT, SIZE 1/4"			
SIZE C				PART NUMBER: 5035-4	
DO NOT SCALE DRAWING		SCALE: 4:1		SHEET 1 OF 1	