

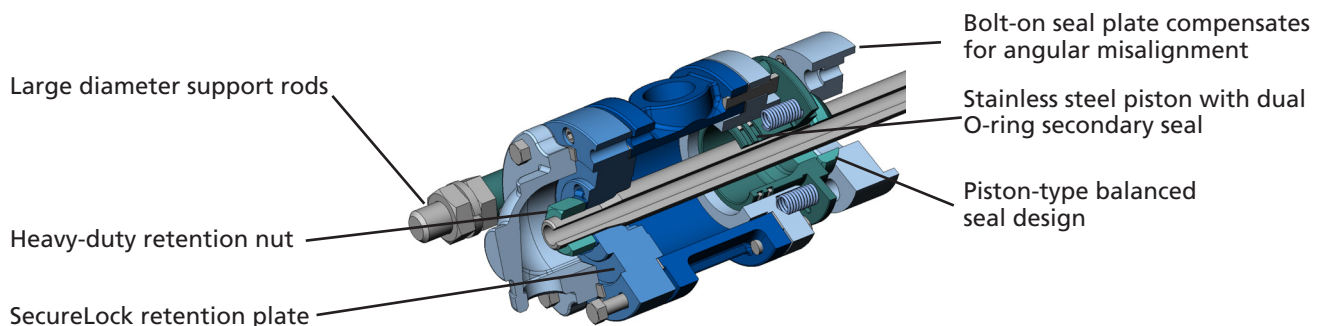
# LJX-PT™ Rotary Joint and SlimLine™ Elbow Syphon System

## Reliable Heat Transfer

The LJX-PT rotary joint and SlimLine elbow syphon system is designed specifically for high-speed corrugators.

The LJX-PT rotary joint maintains alignment in demanding single facer environments. Using heavy-duty mounting rods with integral sleeves and a piston-type balanced seal, the LJX-PT rotary joint remains securely fixed to the roller bearing housing, minimizing coaxial movement while sustaining a proper seal.

The SlimLine elbow syphon maintains its position at higher rotational speeds, enabling maximum condensate removal in high-speed corrugators. Utilizing a tapered wedge, heavy-duty retention nut, and custom-engineered locking key, the SlimLine elbow syphon integrates seamlessly to the SecureLock™ retention plate inside the LJX-PT rotary joint, maintaining proper syphon clearance.



### Features

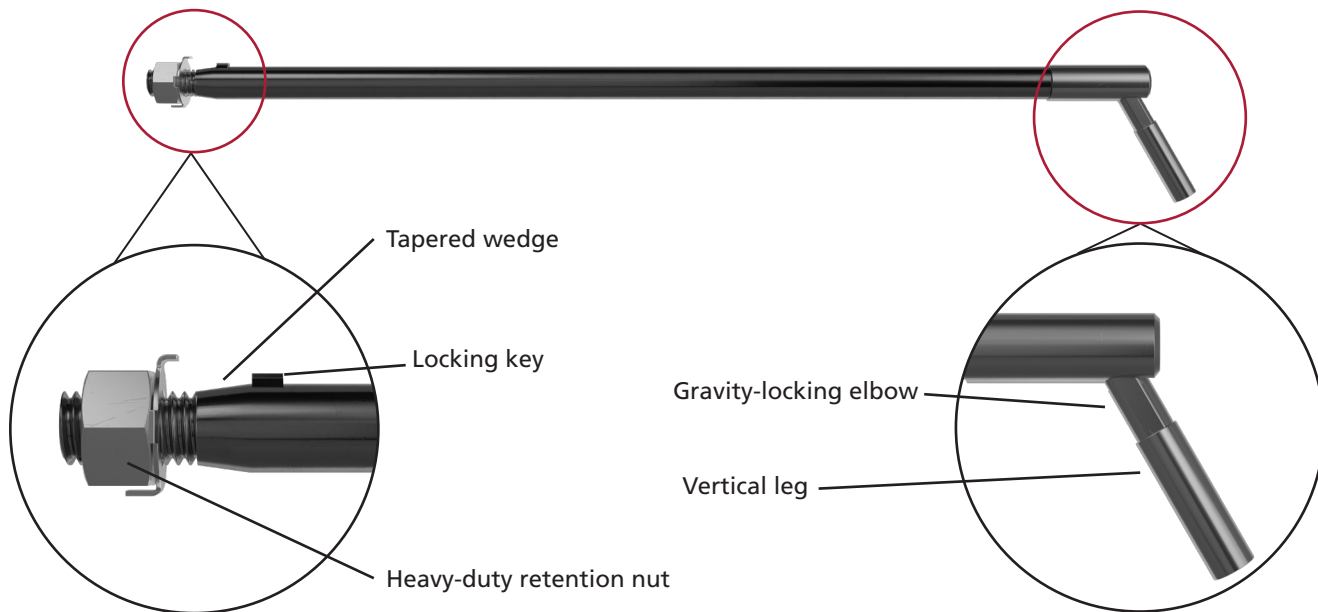


- Large diameter support rods
- Balanced seal design
- Seal plate compensates for misalignment
- SecureLock retention plate
- Corrosion-resistant stainless steel piston
- Dual O-ring sealing elements
- Flexibility in mounting

### Benefits



- Maintains rotary joint alignment over time
- Increased seal reliability and longevity
- Minimized seal loading and wear
- Increased equipment reliability
- Combats steam cutting
- Reliable secondary seal
- No special installation tools required



## Features



- Gravity locking elbow with weighted vertical leg
- Heavy-duty retention nut
- Custom-engineered locking key
- Tapered wedge

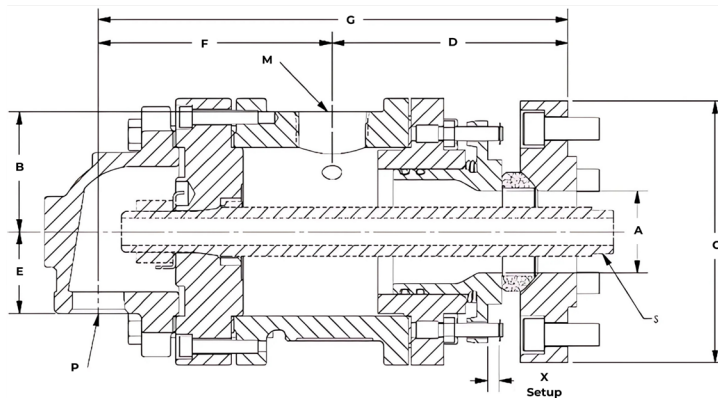
## Benefits



- Syphon securely positions itself due to vertical leg weight
- Reliable rotary joint/syphon connection
- Locks the syphon into position, maintaining syphon clearance
- Seamless integration into rotary joint

### LJX-PT Specifications

Maximum Design Speed:	Roll specific
Speed (Max):	400 rpm
Maximum Design Pressure:	200 psi (13.8 bar)
Maximum Design Temperature:	400°F (204°C)
Service:	Steam



Model	Size	M	P	S	X	A	B	C	D	E	F	G	Units
2500	1 1/2"	1 1/4 DN 32	1 DN 25	1.13 28.6	.26 6.6	1.88 48	2.75 70	6.12 155	5.4 137	1.88 48	5.3 136	10.75 273	inches mm

\*M connection can vary from 3/4" (DN 20) to 1 1/4" (DN 32)

\*P connection can vary from 3/4" (DN 20) to 1" (DN 25)