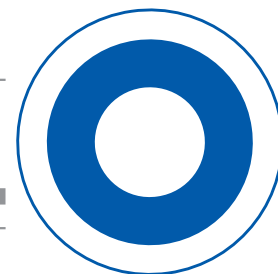


# Water Hose Reel

## Stainless Steel Reel for Kitchen / Restaurant



### Built-out Spring TWA-STS Series

### for Wall and Ceiling-Mounted

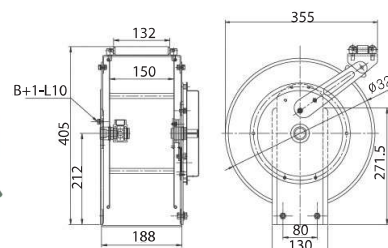


For Cold Water

For Hot Water

For Steam  
(For Drinking and Food)

For Steam  
(For Cleaning)



#### Features of cold water hose reel

We manufactured the hose and also it is only possible to be used by cold water. Especially, the hose material is non-toxic material. So it can be used for drinking. And the reel body material is consisted by stainless steel material. This product is highly durable for oil.

#### Features of hot water hose reel

The hose is not hardened until +70°C. And regarding the outer hose material, it is durable material for oil. It is also can be used for drinking and the reel body material is consisted by stainless steel material. We can guarantee it as a manufacturer.

#### Features of steam hose reel

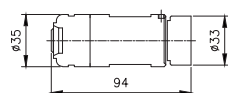
This steam hose is imported product which is certified from FDA and Europe associations. Now it is using in the factories which are applying to drinking water, milk processing and steam even disinfection equipment. the working temperature is from -30°C to 160°C.



For Hot Water



For Cold Water



#### Accessories

(Hanger bracket, anchor bolt. Nut\*4EA, Connecting pin, Hose clamp\*2EA, Inlet hose 1.5m)



- French Quality Assurance Association certified products

| Model       | Hose     |         |       | W.P (BAR) | Weight (kg) | Usage                            | Description                      |
|-------------|----------|---------|-------|-----------|-------------|----------------------------------|----------------------------------|
|             | Material | I.D (Ø) | L (M) |           |             |                                  |                                  |
| TWA-1308    | PVC      | 13      | 8     | 20        | 10          | Drinking<br>Cleaning             | For Cold Water                   |
| TWA-1310    | PVC      | 13      | 10    | 20        | 11          |                                  |                                  |
| TWA-1312    | PVC      | 13      | 12    | 20        | 12          |                                  |                                  |
| TWA-1315    | PVC      | 13      | 15    | 20        | 15          |                                  |                                  |
| TWA-1308W   | PVC      | 13      | 8     | 20        | 11          | Drinking<br>Cleaning             | For Hot Water,<br>Less than 70°C |
| TWA-1310W   | PVC      | 13      | 10    | 20        | 12          |                                  |                                  |
| TWA-1312W   | PVC      | 13      | 12    | 20        | 13          |                                  |                                  |
| TWA-1315W   | PVC      | 13      | 15    | 20        | 15          |                                  |                                  |
| TWA-1308TRH | EPDM     | 13      | 8     | 10        | 15          | Drinking<br>Cleaning             | For Steam,<br>Less than 160°C    |
| TWA-1312TRH | EPDM     | 13      | 12    | 10        | 18          |                                  |                                  |
| TWA-1315TRH | EPDM     | 13      | 15    | 10        | 20          |                                  |                                  |
| TWA-1310VH  | EPDM     | 13      | 10    | 10        | 15          | Cleaning                         | For Steam,<br>Less than 110°C    |
| TWA-1315VH  | EPDM     | 13      | 15    | 10        | 16          |                                  |                                  |
| TWA-1310SEH | NBR      | 13      | 10    | 10        | 15          | Drinking, Cleaning, Disinfection | For Steam,<br>Less than 100°C    |
| TWA-1315SEH | NBR      | 13      | 15    | 10        | 16          |                                  |                                  |

