

BALDOR® • RELIANCE

Product Information Packet

M3554T-57

Part Detail							
Revision:	P	Status:	PRD/A	Change #:		Proprietary:	No
Type:	AC	Prod. Type:	3521M	Elec. Spec:	35WGN307	CD Diagram:	CD0022
Enclosure:	TEFC	Mfg Plant:		Mech. Spec:	35AA001	Layout:	35LYAA001
Frame:	145T	Mounting:	F1	Poles:	04	Created Date:	09-19-2011
Base:	RG	Rotation:	R	Insulation:	F	Eff. Date:	01-22-2016
Leads:	6#18					Replaced By:	
Literature:		Elec. Diagram:					

Nameplate NP2717L							
CAT NO	M3554T-57						
SPEC.	35AA001N307H1						
HP	1.5	PH	3				
VOLTS	230/400						
AMP	4.3/2.5						
RPM	1435						
FRAME	145T	HZ	50	I.P.	54		
SER.F.	1.15	CODE	K	DES	B	CL	F
NEMA-NOM-EFF	81.5						% (100%)
PF	79	USABLE AT 208V					
RATING	40C AMB-CONT	CC					
DE BRG	6205	ODE 6203					
ENCL	TEFC	SN					
BLANK	IE2-81.4(75%)79.5(50%)						

Parts List		
Part Number	Description	Quantity
SA231060	SA 35AA001N307H1	1.000 EA
RA218077	RA 35AA001N307H1	1.000 EA
35FN3002A05SP	EXFN, PLASTIC, 6.376 OD, .638 ID	1.000 EA
NS2512A01	INSULATOR, CONDUIT BOX X	1.000 EA
35CB3009	35 CB W/1.09 DIA. LEAD HOLE @ 6:	1.000 EA
36GS1000SP	GASKET-CONDUIT BOX, .06 THICK #SV-330 LE	1.000 EA
51XB1016A07	10-16 X 7/16 HXWSSLD SERTYB	2.000 EA
11XW1032G06	10-32 X .38, TAPTITE II, HEX WSHR SLTD U	1.000 EA
35FE3100M01	FREP TEFC ASSEMBLY FOR ROUTING	1.000 EA
HW4500A01	1641B(ALEMITE)400 UNIV, GREASE FITT	1.000 EA
HW5100A03	WAVY WASHER (W1543-017)	1.000 EA
35PE3101A01	PUEP ASSEMBLY FOR ROUTING	1.000 EA
HW4500A01	1641B(ALEMITE)400 UNIV, GREASE FITT	1.000 EA
XY1032A02	10-32 HEX NUT DIRECTIONAL SERRATION	4.000 EA
51XB1214A16	12-14X1.00 HXWSSLD SERTYB	1.000 EA
35FH4005A84SP	IEC FH W/GRSR, NO DIMPLES PRIMED	1.000 EA
51XW1032A06	10-32 X .38, TAPTITE II, HEX WSHR SLTD S	3.000 EA
35CB4521GX	CONDUIT BOX LID KIT	1.000 EA
51XW0832A07	8-32 X .44, TAPTITE II, HEX WSHR SLTD SE	4.000 EA
HW2501D13	KEY, 3/16 SQ X 1.375	1.000 EA
HA7000A01	KEY RETAINER 7/8" DIA SHAFT	1.000 EA
85XU0407S04	4X1/4 U DRIVE PIN STAINLESS	2.000 EA
MJ1000A02	MOBIL POLYREX EM/35LB	0.050 LB
HA3100A18	THRUBOLT 10-32 X 9.250	4.000 EA

Parts List (continued)		
Part Number	Description	Quantity
HA4067A01	PUSH IN DRAIN FITTING (BLACK)	1.000 EA
HA4067A01	PUSH IN DRAIN FITTING (BLACK)	1.000 EA
MG1000G27	MED CHARCOAL METALLIC GREY	0.017 GA
LB1119N	WARNING LABEL	1.000 EA
LC0034	CONNECTION LABEL	1.000 EA
MN416A01	TAG-INSTAL-MAINT no wire (1200/bx) 11/14	1.000 EA
NP2717L	ALUM NEMA IE2 UL CSA CE CC	1.000 EA
36PA1000	PKG GRP, PRINT PK1016A06	1.000 EA

AC Induction Motor Performance Data

Record # 35221 - Typical performance - not guaranteed values

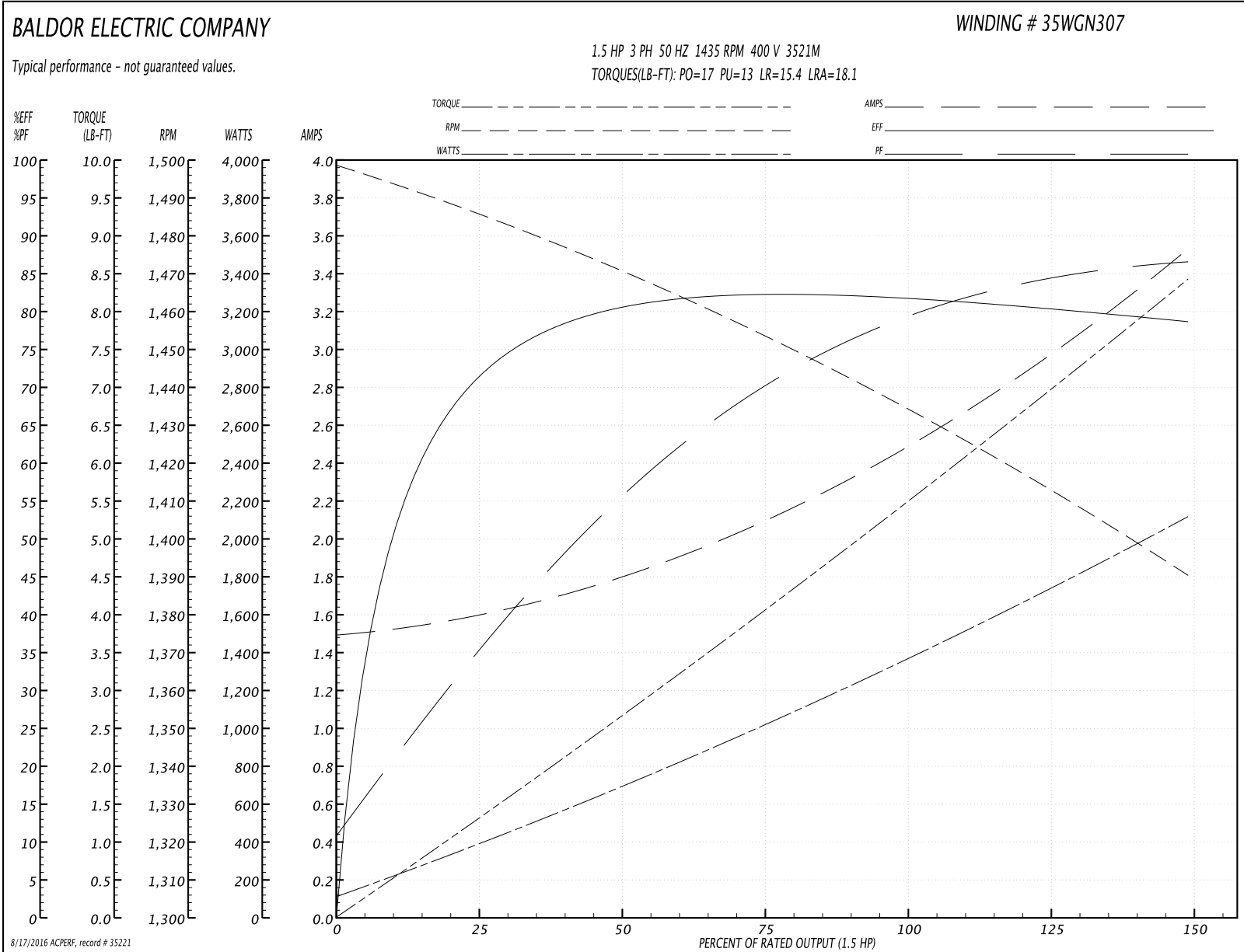
Winding: 35WGN307-R001	Type: 3521M	Enclosure: TEFC
-------------------------------	--------------------	------------------------

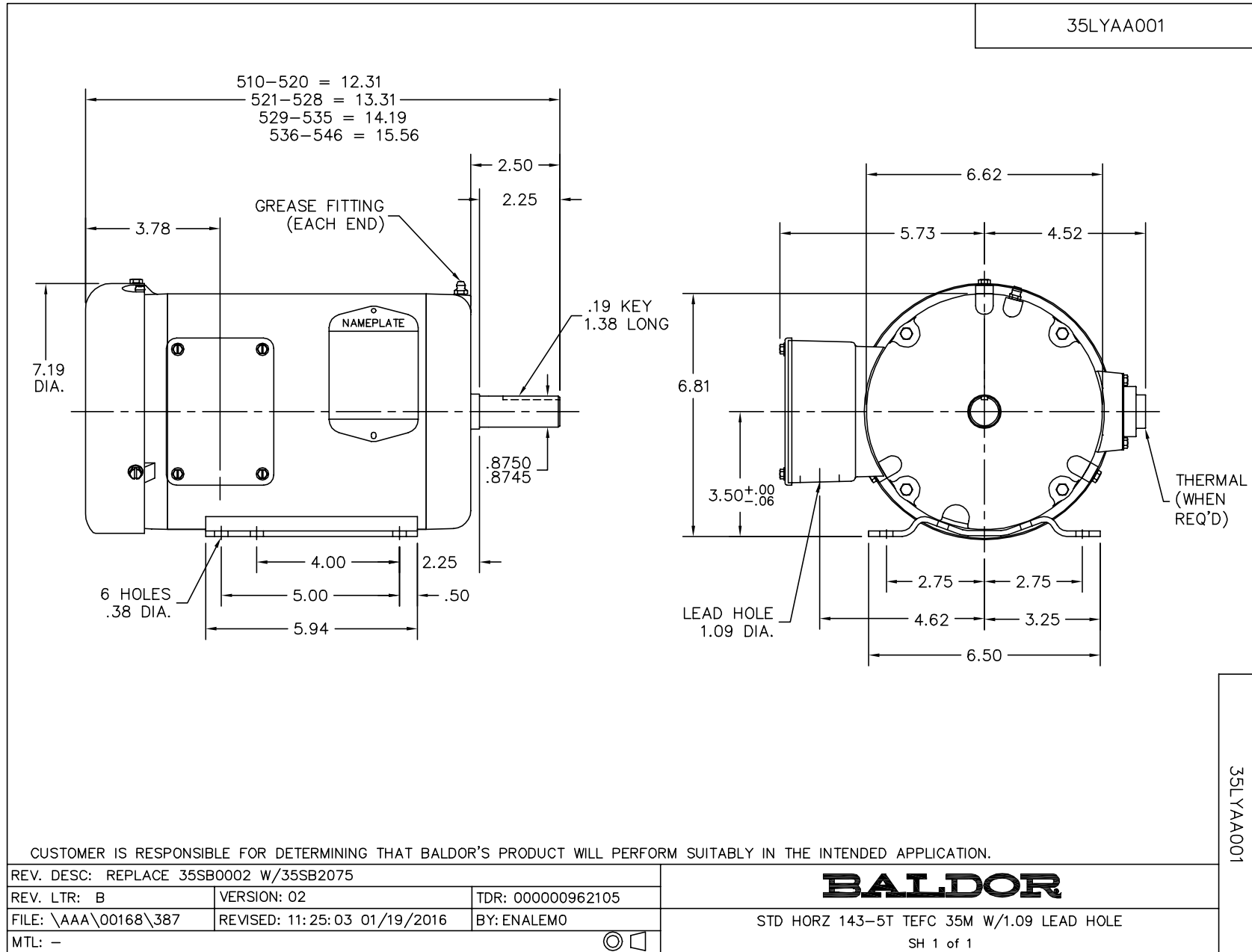
Nameplate Data				400 V, 50 Hz: High Voltage Connection	
Rated Output (HP)	1.5			Full Load Torque	5.46 LB-FT
Volts	230/400			Start Configuration	direct on line
Full Load Amps	4.3/2.5			Breakdown Torque	17 LB-FT
R.P.M.	1435			Pull-up Torque	13 LB-FT
Hz	50	Phase	3	Locked-rotor Torque	15.4 LB-FT
NEMA Design Code	B	KVA Code	K	Starting Current	18.1 A
Service Factor (S.F.)	1.15			No-load Current	1.51 A
NEMA Nom. Eff.	81.5	Power Factor	79	Line-line Res. @ 25°C	10.8 Ω
Rating - Duty	40C AMB-CONT			Temp. Rise @ Rated Load	67°C
S.F. Amps				Temp. Rise @ S.F. Load	82°C
				Rotor inertia	0.124 LB-FT ²

Load Characteristics 400 V, 50 Hz, 1.5 HP

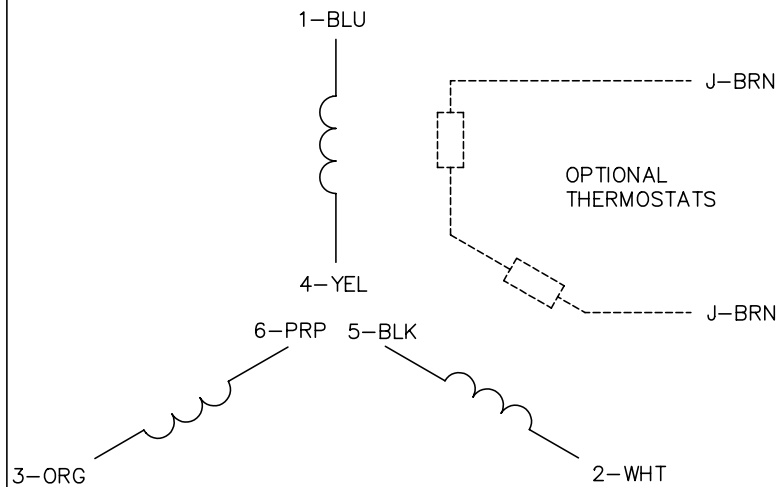
% of Rated Load	25	50	75	100	125	150	S.F.
Power Factor	35	56	70	79	84	87	82
Efficiency	70.4	78.5	81.4	82	80.7	78.5	81.2
Speed	1486	1470	1454	1435	1413	1390	1422
Line amperes	1.57	1.79	2.1	2.49	2.99	3.52	2.79

Performance Graph at 400V, 50Hz, 1.5HP Typical performance - Not guaranteed values

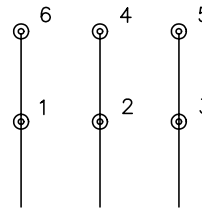




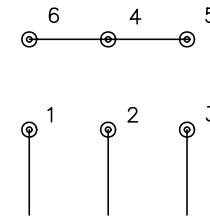
CD0022



LOW VOLTAGE
(1D)



HIGH VOLTAGE
(1Y)



NOTES:

1. INTERCHANGE ANY TWO LINE LEADS TO REVERSE ROTATION.
2. OPTIONAL THERMOSTATS ARE PROVIDED WHEN SPECIFIED.
3. ACTUAL NUMBER OF INTERNAL PARALLEL CIRCUITS MAY BE A MULTIPLE OF THOSE SHOWN ABOVE.
4. LEAD COLORS ARE OPTIONAL. LEADS MUST ALWAYS BE NUMBERED AS SHOWN.

REV. DESC: REVISE TO SHOW OPTIONAL COLORS			
REV. LTR: F	BY: JLP	REVISED: 01/21/99 3:54	TDR: 0171435
CD0022		FILE: AAA00005144	MDL: -
		MTL: -	

BALDOR ELECTRIC Co.

3PH, DV, 6 LEADS, DELTA/WYE CONNECTION

CD0022